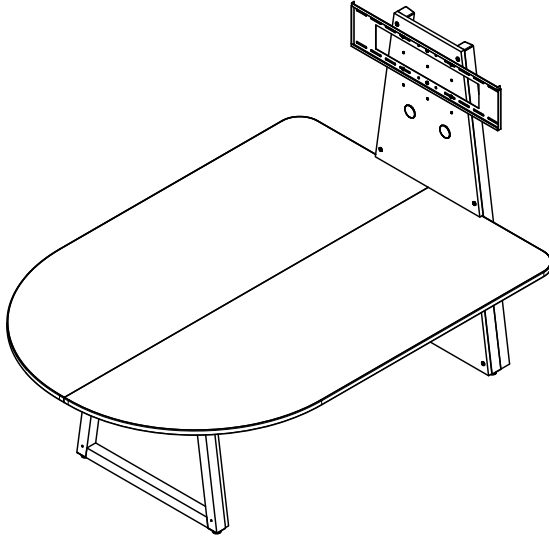
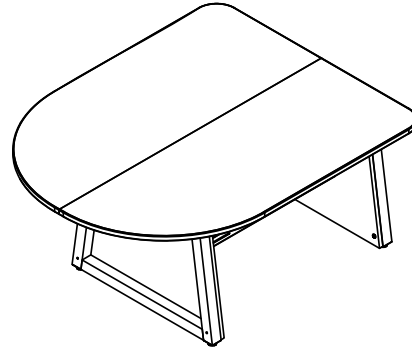


Technical Specifications

available sizes:	
37102	48"W x 60"L x 29"H
37103	48"W x 84"L x 29"H
37104	60"W x 60"L x 29"H
37105	60"W x 84"L x 29"H



60"W x 84"L
(shown with optional display stand)



48"W x 60"L

Whether used in a classroom, library or with video conferencing collaboration, this InVision collaborative table makes it easy for people to gather and share ideas. The InVision collaboration table combined with the optional display mount (#37106) connects multiple mobile devices to a large central HDTV monitor. With seamless integration, you can share what is on the screen of laptops, tablets, and smartphones and seamlessly switch from one device to another.

Features and Benefits

- Durable powder coated steel chassis
- Scratch and impact-resistant 1.063" high-pressure laminate worksurface
- Durable T-mold edge trim
- Laminated worksurface is shipped in two sections and assembled at final location for easy installation and lower shipping cost
- Ventilated cord channel keeps equipment cool
- Four cord channel side panels provide easy access to internal wiring
- Spectrum can provide custom worksurface cutouts to fit your electronics
- Cable grommets throughout unit keep wires and cords organized
- Cord channel doubles as a support brace to minimize flexing
- Leveling glides keep table level on uneven surfaces
- Optional display stand provides ability to attach flat panel monitor to table
- Optional two-position camera mount provides ability to mount camera for video teleconferencing
- Optional equipment rack with double-bolt, keyed locking doors provide security and easy-access to rack-mount electronics
- The best value in the quickly changing collaboration system environment
- Warranted to be free of all defects in materials and workmanship for 10 years

Options & Accessories

Page 9

Color Options

Standard laminate / color combinations

Wild Cherry / Black
(CHB)



Indigo Organix / Black
(IB)



Indigo Organix / Silver Sparkle
(IS)



Fusion Maple / Black
(FMB)



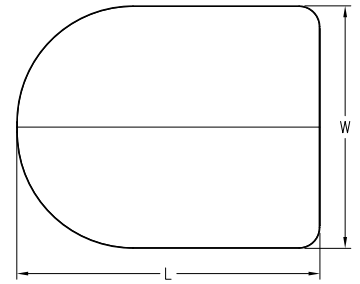
Fusion Maple / Silver Sparkle
(FMS)



Standard color combination refers to the quickest deliverable product color combination. Custom laminates and color combinations are available—additional lead-times and up-charges may apply. Call 1-800-235-1262 for further information.

Construction

- The worksurface is constructed from 1.063" thick NAUF (no added urea formaldehyde) composite board with .030 high-pressure laminate on one face, and a balancing phenolic backer on the opposing face
- Metal components consist of 16-gauge steel
- The formed worksurface braces are 14-gauge steel
- Worksurface edges are covered with black 3mm T-mold edges
- All metal components are finished with a scratch-resistant powder coat epoxy
- Tables are shipped KD (Knocked-Down) and require assembly



Specifications


Worksurface	available sizes: 48"W x 60"L x 29"H - 37102 48"W x 84"L x 29"H - 37103 60"W x 60"L x 29"H - 37104 60"W x 84"L x 29"H - 37105
Cord channel	84"L worksurfaces: 10"W nominal x 18"H x 59.5"L 60"L worksurfaces: 10"W nominal x 18"H x 42.5"L
Seating	84"L: up to 6 people 60"L: up to 4 people
ADA-compliance*	48"W x 60"L x 29"H - 37102 no ADA-compliant seats 48"W x 84"L x 29"H - 37103 60"W x 60"L x 29"H - 37104 - 2 ADA seats (without optional equipment rack) 60"W x 84"L x 29"H - 37105 - 2 ADA seats (with or without optional equipment rack) <small>*Minimum ADA guidelines for knee clearances are 30"W x 19"D x 27"H</small>
Electrical	Spectrum manufactures furniture that supports electrical devices from multiple manufacturers. We provide tables with a flexible array of cutouts for power and communication: not the electronic devices themselves. Under table wiring channels and rack rail are compatible with Extron, Crestron, Altinex, and AMX controllers. Please consult your controller supplier for matrix switches and other devices. Device details (brand, model #, cutout size, quantity, etc.) will need to be conveyed to your sales rep when ordering.
Shipping weights (nominal)	266 lbs - 37102 (48"W x 60"L) 326 lbs - 37103 (48"W x 84"L) 303 lbs - 37104 (60"W x 60"L) 379 lbs - 37105 (60"W x 84"L)
Meets or exceeds applicable ANSI-BIFMA test standards	



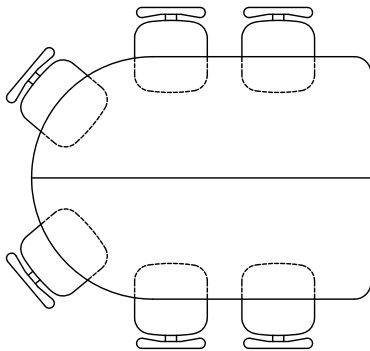
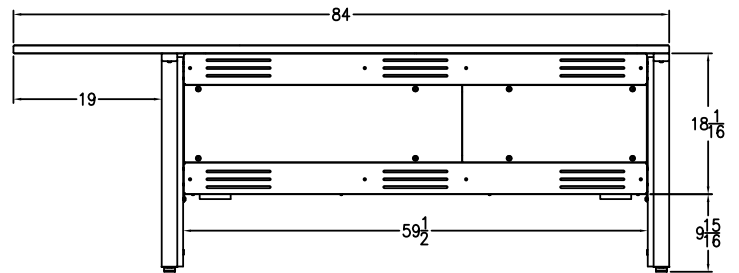
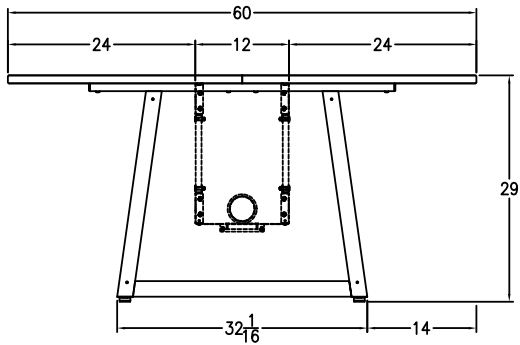
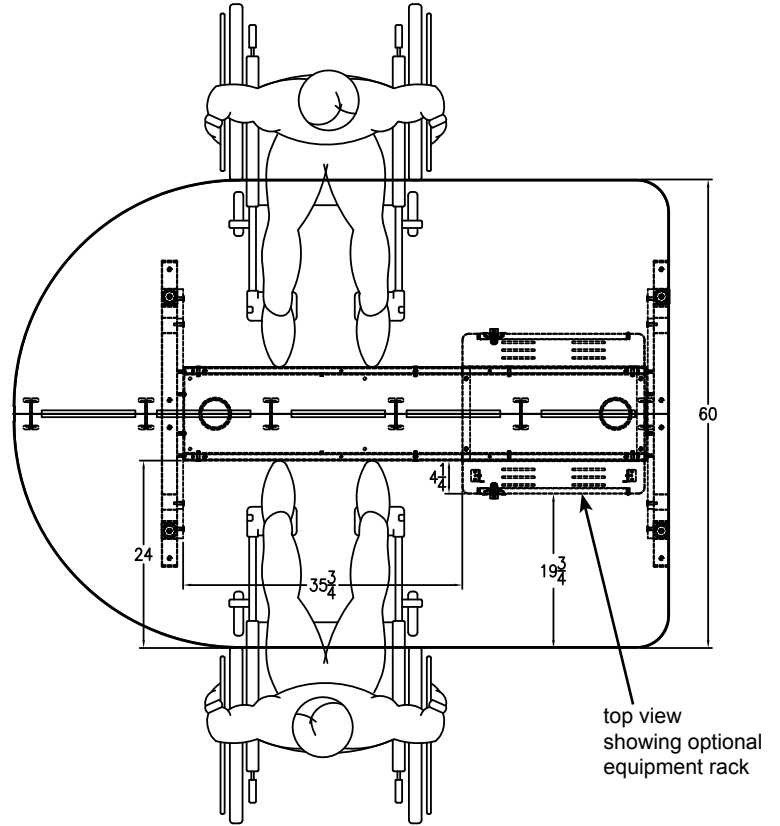
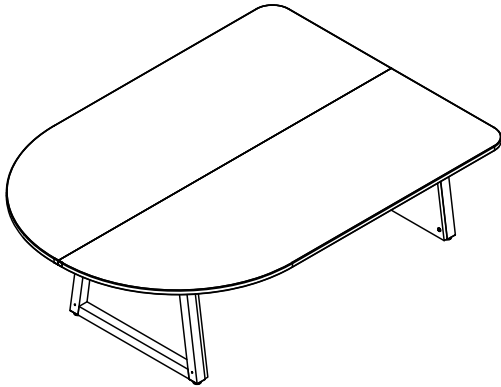
Specifications subject to change without notice

Note: The 2 pc worksurface can be ordered blank or with cutouts. The table has been designed for many of the currently available surface-mount devices on the market.

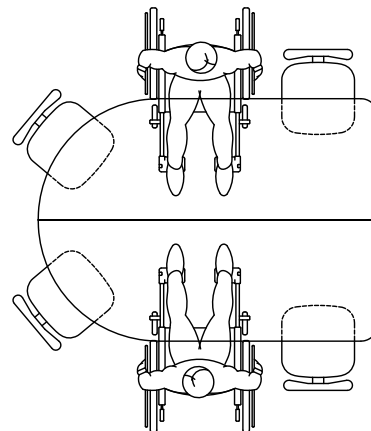
***When ordering a table with cutouts, specify complete details of the device(s) (brand, model number, cutout size, quantity, etc.) to the Spectrum sales rep when ordering.**

 **Note: Some controllers and devices require additional space around the cutout for clamping under the worksurface. Please double check your device specifications to ensure adequate space around the cutout.**

Note: Spectrum Industries, Inc, manufactures furniture that supports a wide variety of power and communication devices from a variety of manufacturers. The Invision Access table is compatible with many Extron, Crestron, Altinex, AMX, and other devices. Spectrum does not resell these products; please consult your electronic supplier for the equipment that will best suit your needs and utilize these specifications to verify the fit.

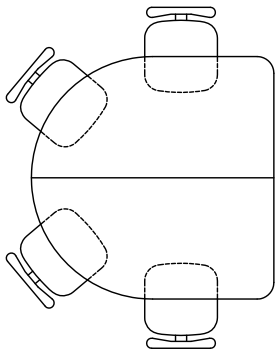
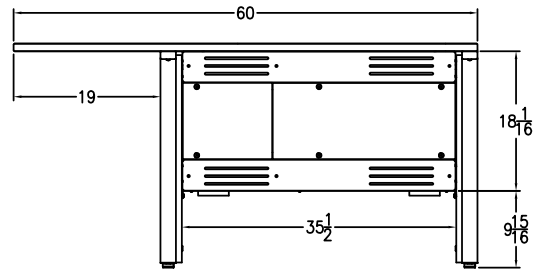
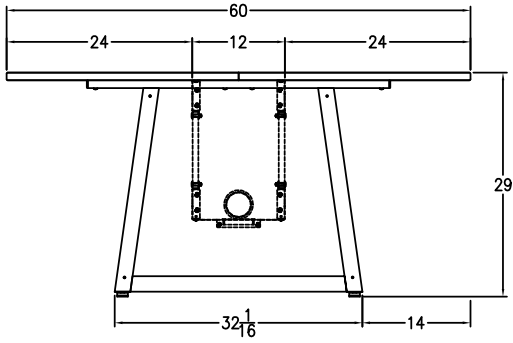
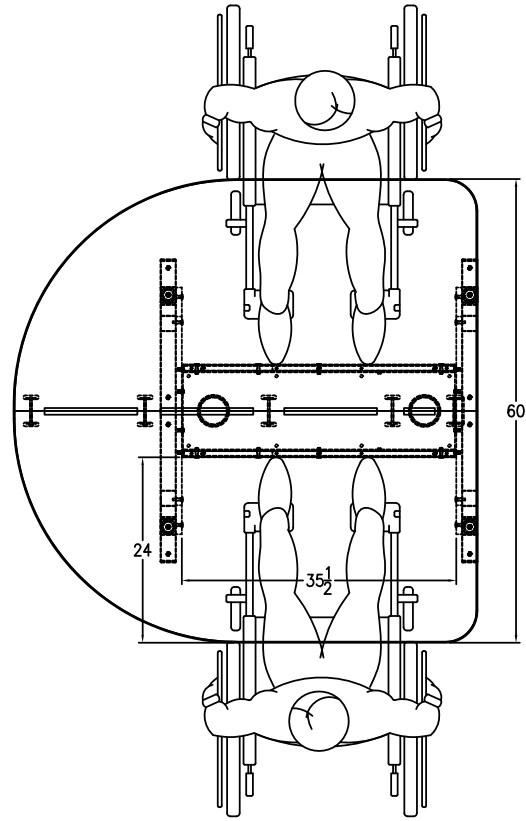
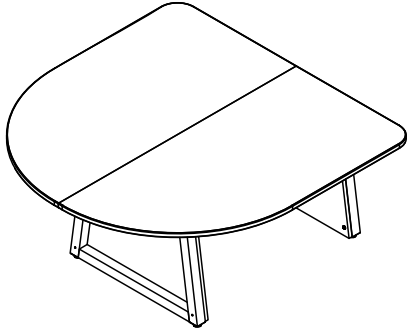


seats up to 6

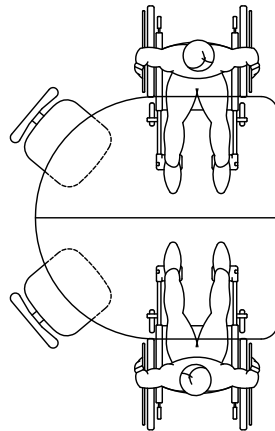


seats up to 2 ADA seats with or without optional equipment rack



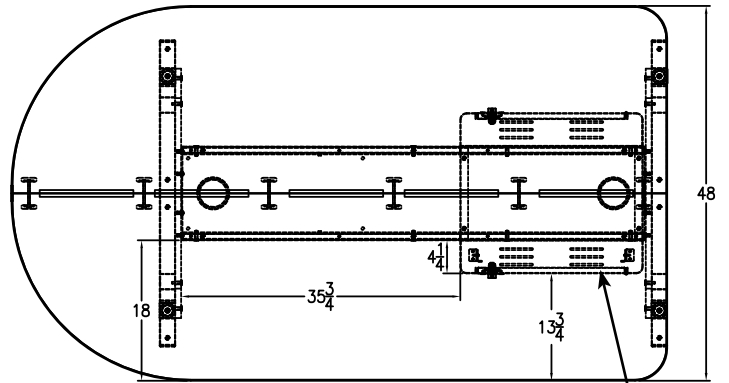
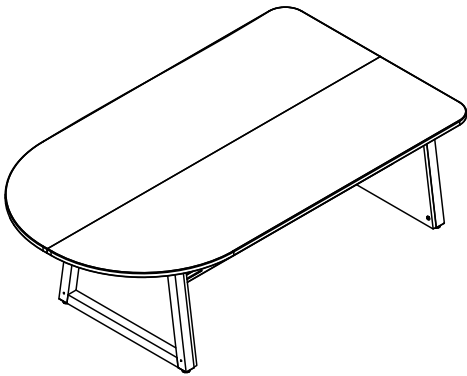


seats up to 4

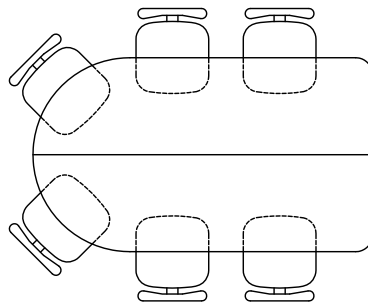
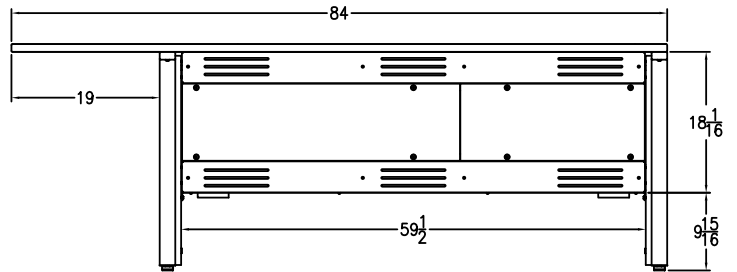
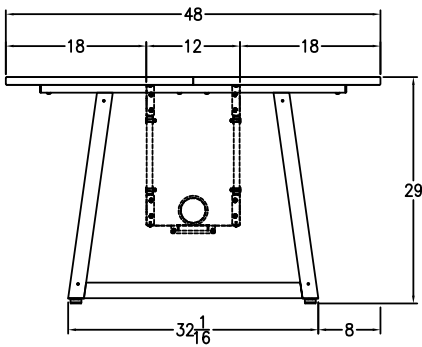


seats up to 2 ADA seats
without optional equipment rack

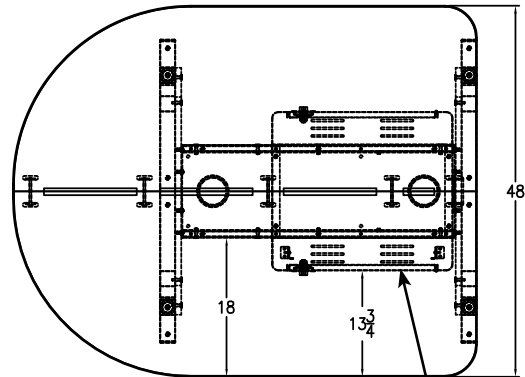
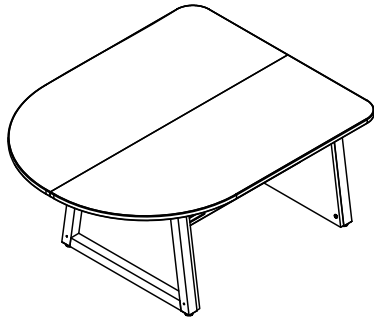




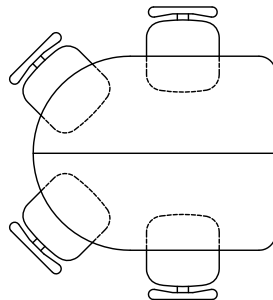
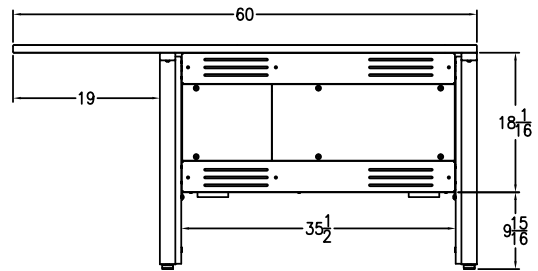
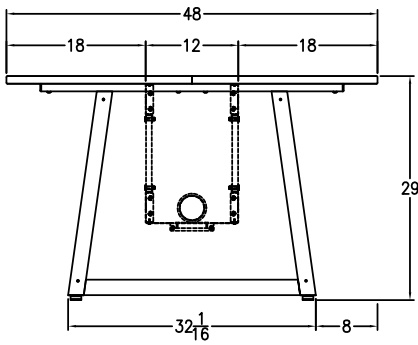
top view showing optional equipment rack



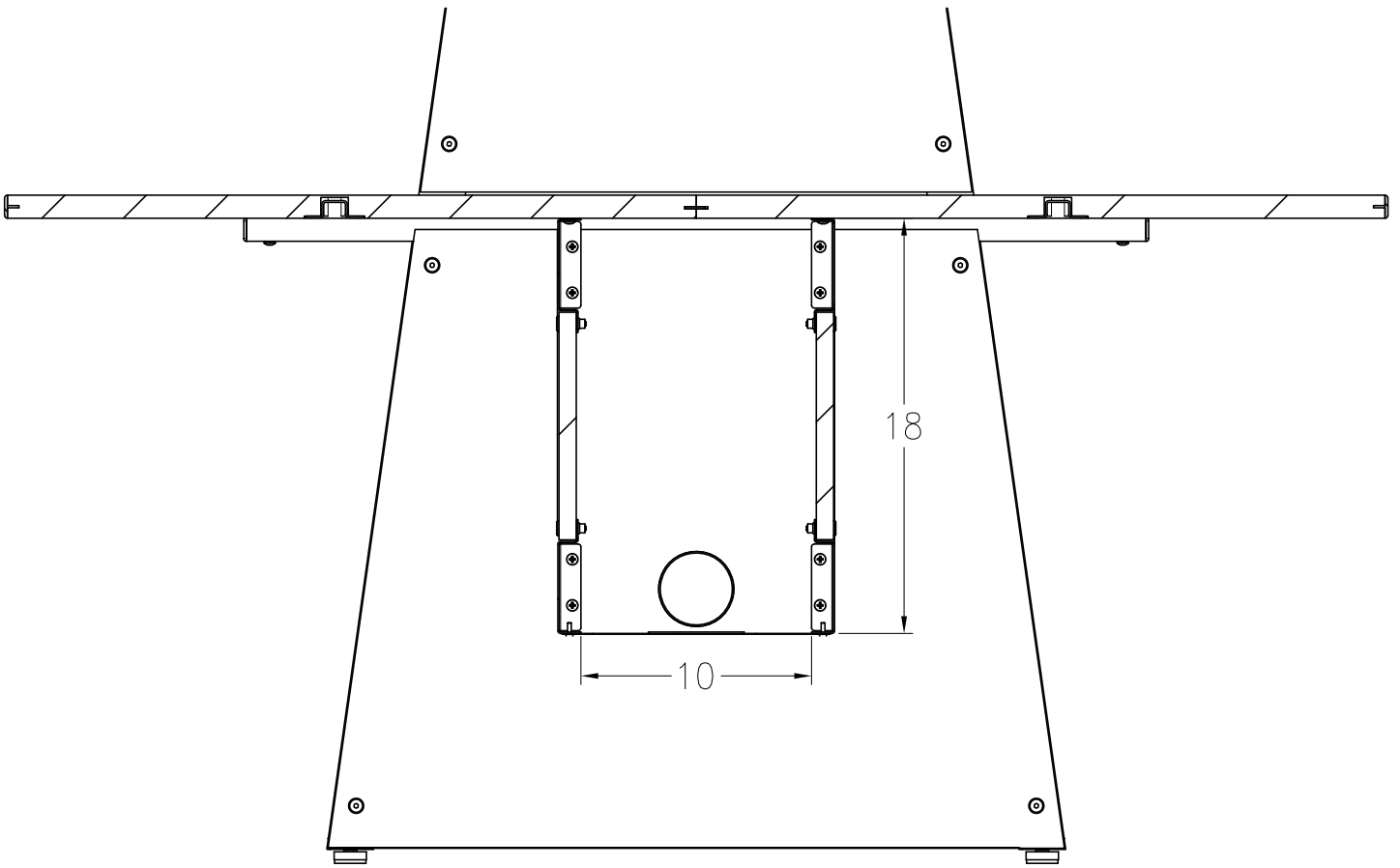
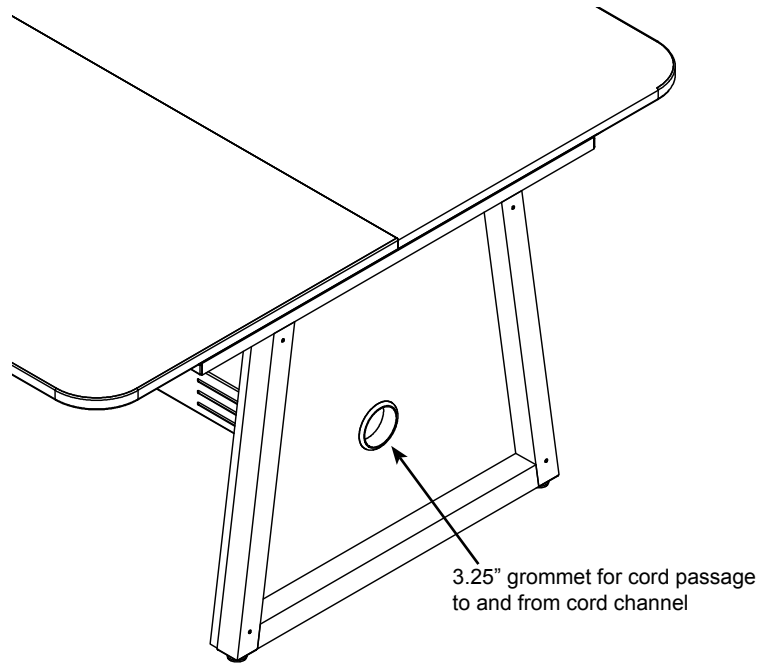
seats up to 6
(does not provide ADA-compliance due to 48"W worksurface)



top view showing optional equipment rack



seats up to 4
(does not provide ADA-compliance due to 48"W worksurface)



Note: The 2 pc worksurface can be ordered blank or with cutouts. The table has been designed for many of the currently available surface-mount devices on the market.

***When ordering a table with cutouts, specify complete details of the device(s) (brand, model number, cutout size, quantity, etc.) to the Spectrum sales rep when ordering.**



Note: Some controllers and devices require additional space around the cutout for clamping under the worksurface. Please double check your device specifications to ensure adequate space around the cutout.

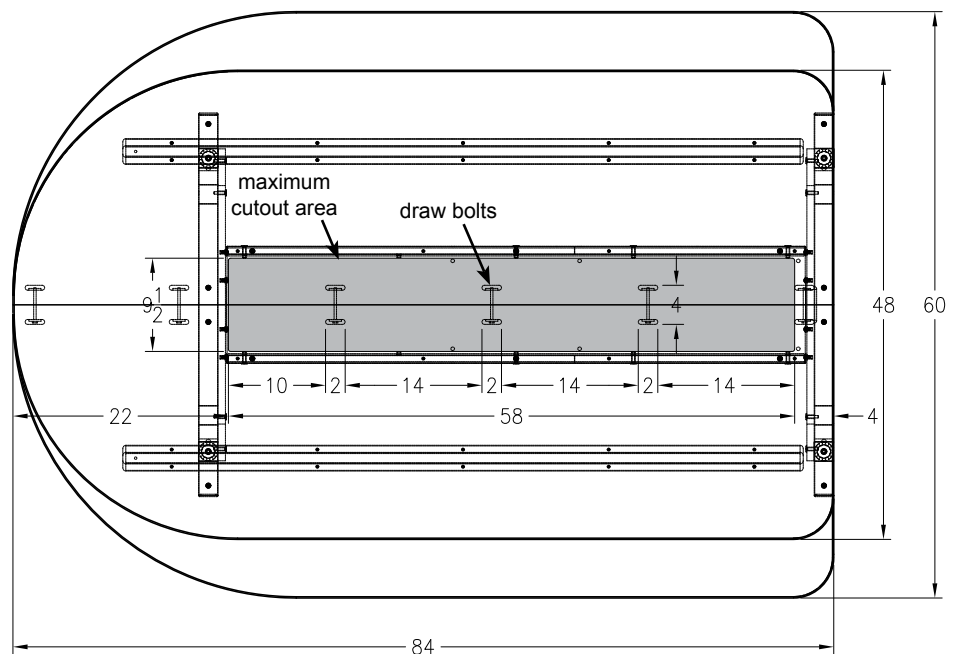
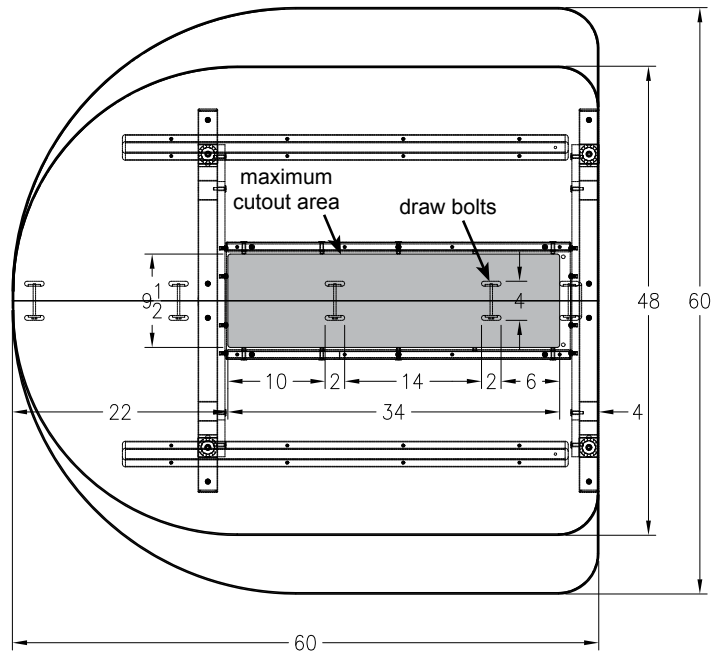
Note: Spectrum Industries, Inc. manufactures furniture that supports a wide variety of power and communication devices from a variety of manufacturers. The Invision Access table is compatible with many Extron, Crestron, Altinex, AMX, and other devices. Spectrum does not resell these products; *please consult your electronic supplier* for the equipment that will best suit your needs and utilize these specifications to verify the fit.

Custom cutouts by Spectrum

2 cutouts are provided at no charge. Spectrum can provide cutouts exactly matching any commercially available data and electrical power outlet, but are only recommended within the maximum cutout areas shown. Cutouts made beyond this shaded area could interfere with the legs, cord channel rails, or worksurface reinforcement bars.

Cutouts in standard (blank) worksurfaces by customer

Cutouts in standard (blank) worksurfaces can be made by the customer after the table has been assembled, but are only recommended within the maximum cutout areas shown. Cutouts made beyond this shaded area could interfere with the legs, cord channel rails, or worksurface reinforcement bars. Before assembling the worksurface and locating the cutouts, consideration should be given to avoid the draw bolts along the worksurface seam. See draw bolt location dimensions.

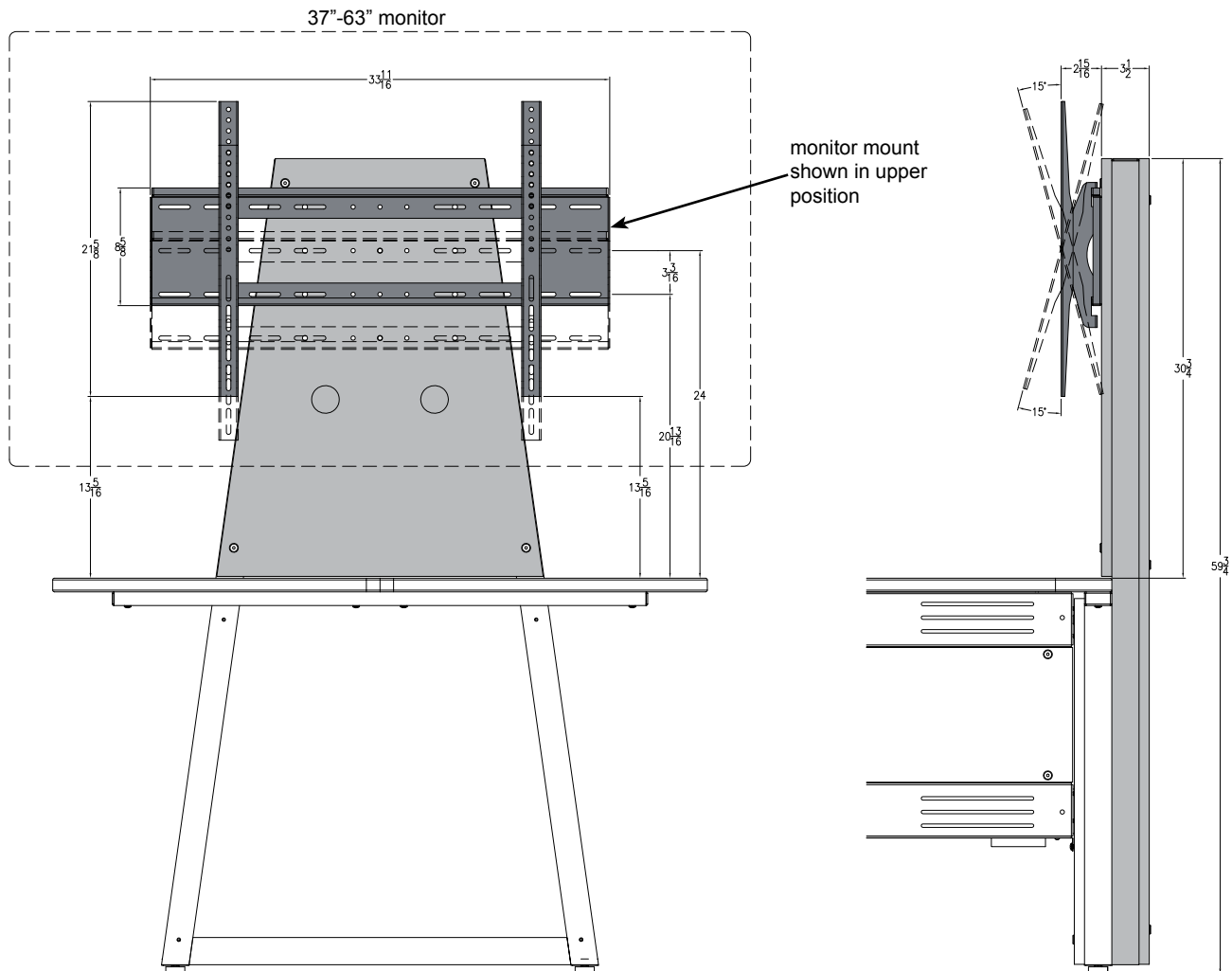
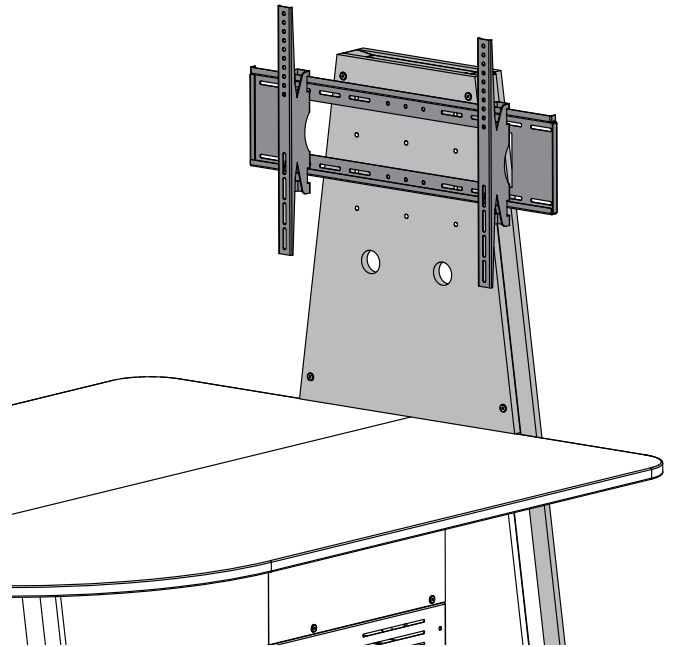


Options

Display Stand with monitor mount - 37106

- Stand attaches directly to leg
- Includes two-position VESA monitor mount with tilting mounting brackets
- Provides secure and hidden wiring channel to wiring under table, HDTV, and power/communication to wall
- Laminate panel matches table color and can be drilled to support other custom monitor mounts
- Available in all standard color combinations
- Accepts two-position camera mount 37108
- Two-position tilting universal monitor mount

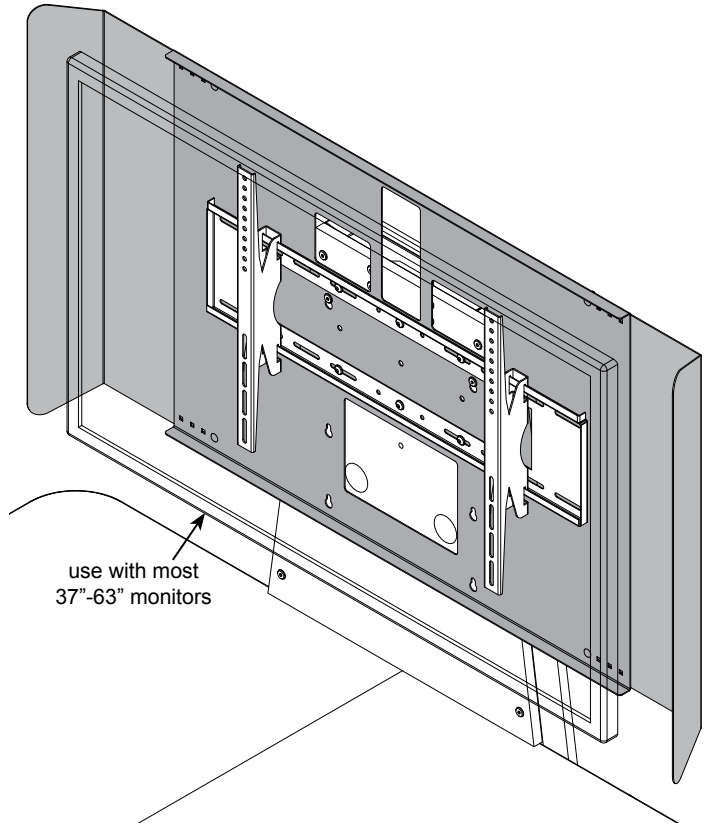
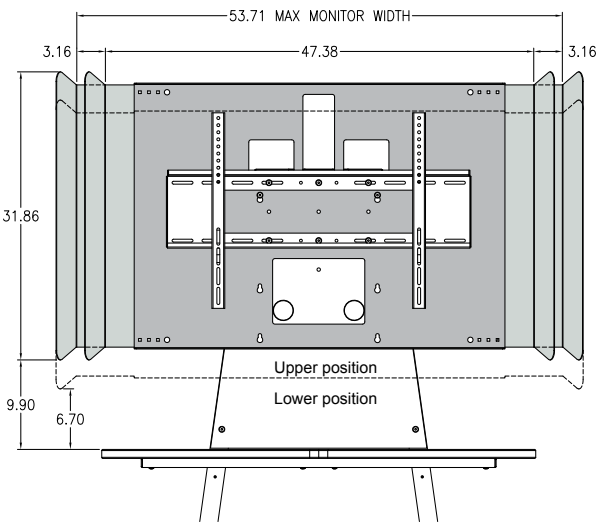
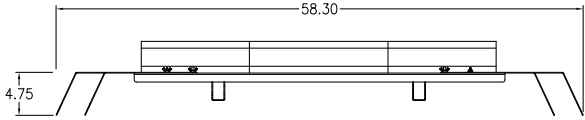
monitor size range	37"-63" diagonal
max weight capacity	200 lbs
tilting	15° range
available colors	CHB, FMB, FMS, IB, IS
box dimensions (nominal)	60" x 32" x 4"
weight	77.1 lbs



InVision Access Display Shroud - 95532

- Helps project sound from rear monitor speakers to audience
- Protects monitor and hides wires
- Adjustable width
- Upper and lower height mounting options
- Made of aluminum
- Requires Access Display Stand 37106

monitor size range	for <u>one</u> 37"-63" monitor
available colors	B, S
box dimensions (nominal)	N/A
weight (nominal)	38 lbs

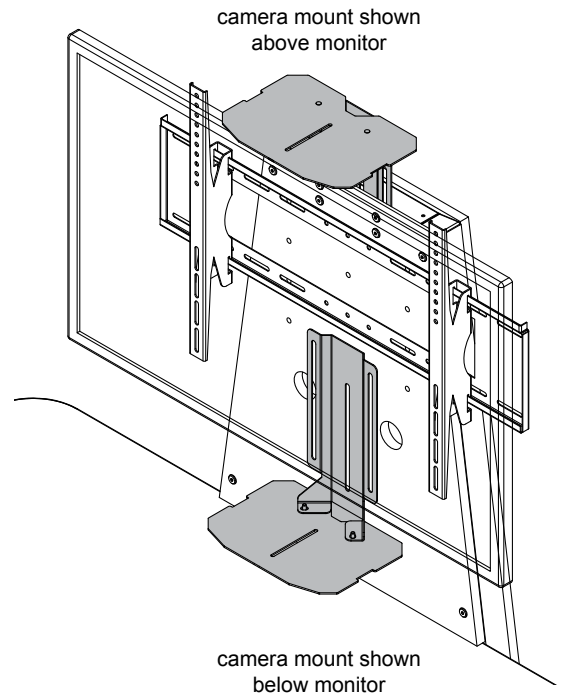
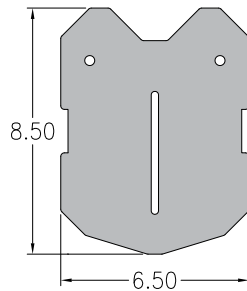
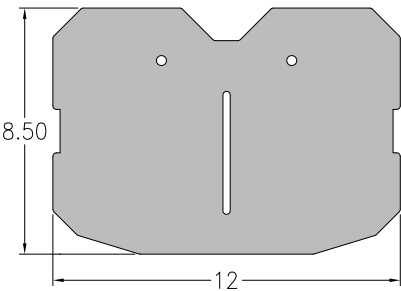


Note: The display shroud is **not** compatible with the dual display mount.

Camera Mount - 37108

- Provides ability to mount camera for video teleconferencing
- Requires Access Display Stand 37106
- Mounts above monitor for group teleconferencing
- Adjustable height bracket provides shelf height adjustment
- Includes two shelf sizes to accommodate most camera and video devices
- Not recommended for use with the dual display mount

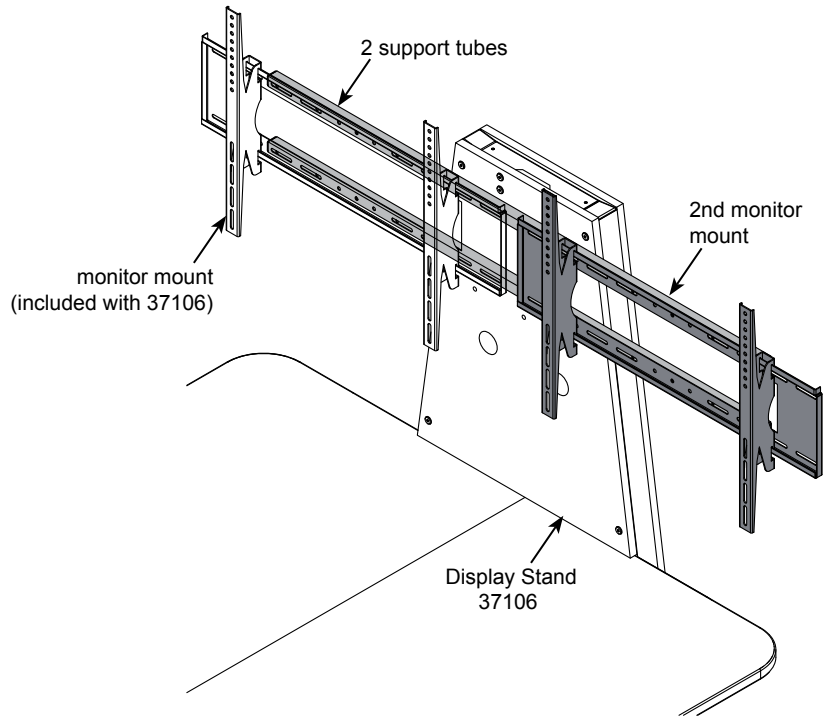
shelf sizes included	12"W x 8.5"D and 6.5"W x 8.5"D
available colors	B, S
box dimensions (nominal)	14" x 9" x 3.5"
weight (nominal)	7 lbs



InVision Access Dual Display Mount - 37124

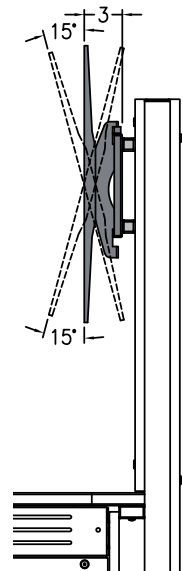
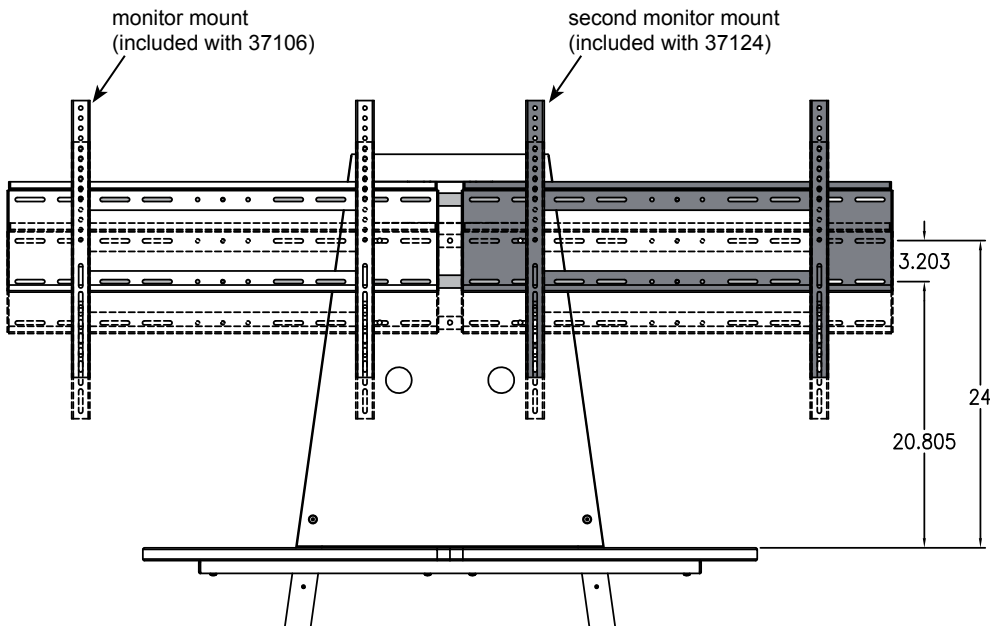
- For two monitors up to 42"
- Includes a 2nd two-position VESA monitor mount with tilting mounting brackets
- Includes 2 support tubes
- Adjustable left-to-right
- Requires Access Display Stand 37106

monitor size range	most monitors up to 42" diagonal
tilting	15° range
available colors	B
box dimensions (nominal)	N/A
weight (nominal)	29 lbs



Note: The dual display mount is not compatible with the display shroud.

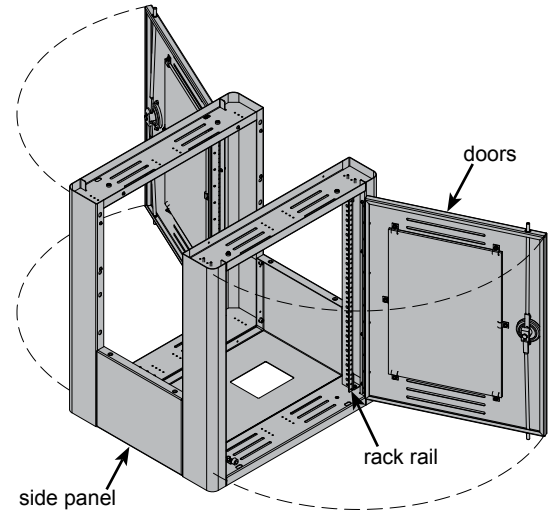
Two-vertical positions available
(dimensions shown to center of mount)



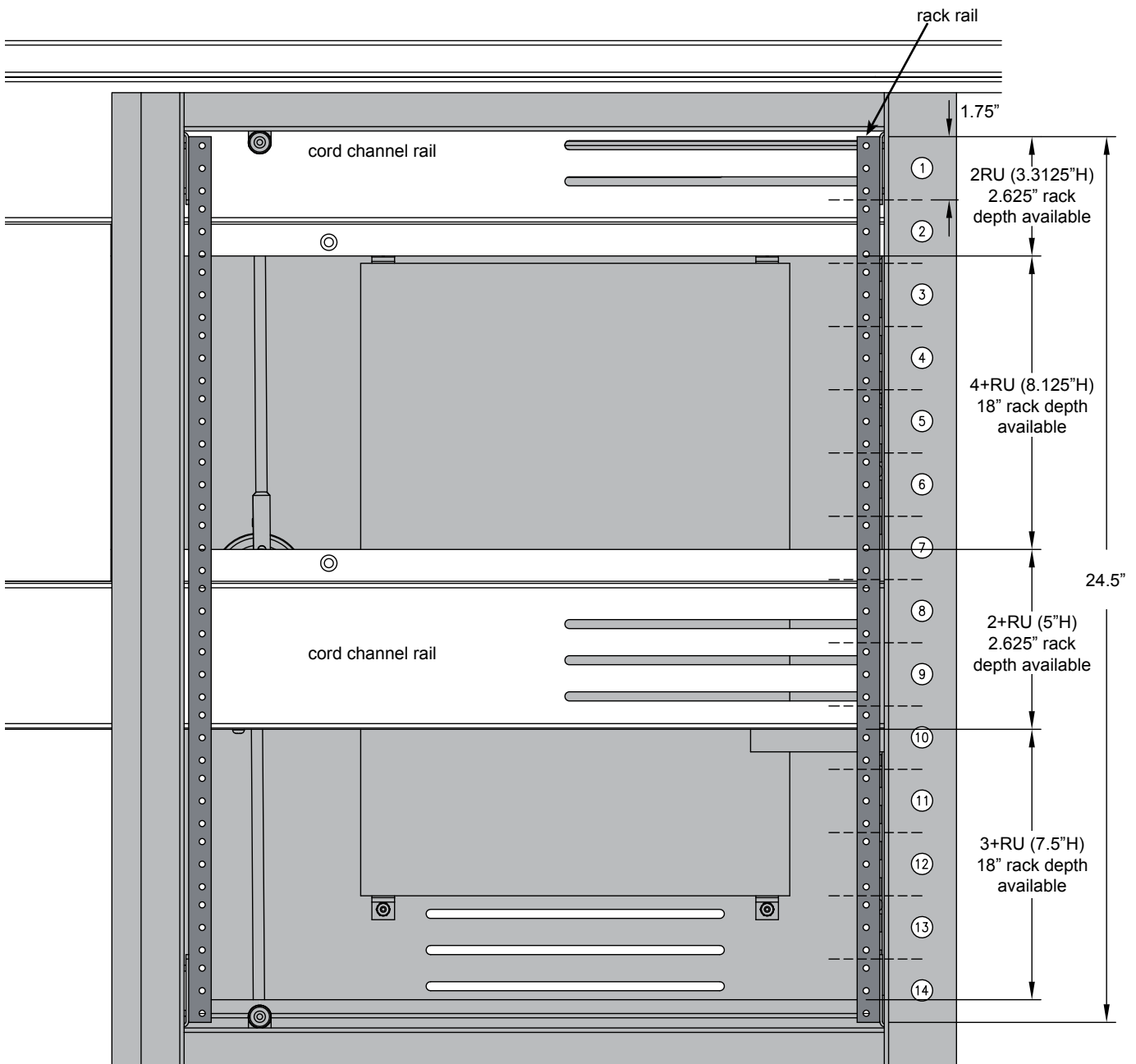
Equipment Rack - 37107

- The equipment rack provides 7RU with up to 18" of depth for rack-mount equipment. Approximately 4½RU is available in front of the cord channel rails with a depth of 2.625". This space directly in front of the cord channel rails can be used for fans, lights, or other rack-mount devices with a depth less than 2.625"
- Two double-bolt, keyed locking doors provide security and easy-access to each side of the rack
- Ventilated to keep equipment cool
- Laminated door panels match laminate/leg color
- Available in all standard color combinations

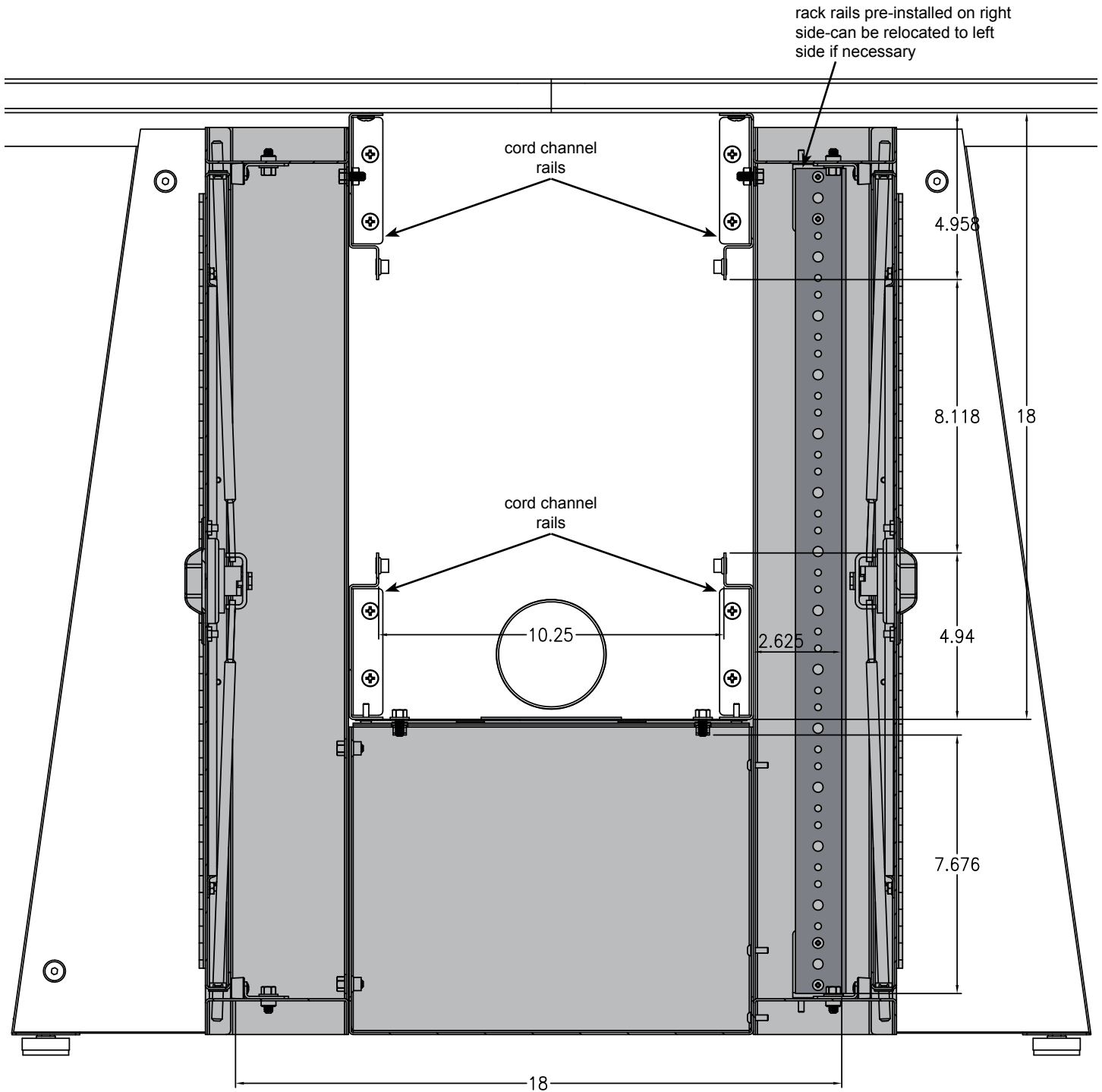
Capacity	7RU
available colors	CHB, FMB, FMS, IB, IS
box dimensions (nominal)	23.375" x 20.5" x 27"
weight (nominal)	58.9 lbs



front view of equipment rack (shown without door)



section view of installed
equipment rack



Note: Rack-mount accessories with a depth greater than 18"D will not fit in the equipment rack. Check the dimensions of all equipment before installation.

Warranty

WE WILL MAKE IT RIGHT FOR YOU!

Spectrum is committed to provide complete customer satisfaction. Each of our products is manufactured from the best materials available and each product is stringently monitored throughout the production process through our P.A.C.E. program (Product Assurance to meet Customer Expectations).

We expressly warrant that Spectrum products will be of good quality and workmanship and free from defect for the period set out in the warranty table below from the date of delivery. This warranty shall not apply to defects or damage resulting from misuse, abuse, neglect, improper care, modification or repair not authorized by Spectrum, or any other cause outside the control of Spectrum. Spectrum will, at its sole option, either repair or replace the defective product.

This warranty is exclusive; no other warranty, written or oral, is expressed or implied. This warranty is given by Spectrum to Buyer and to no other person or legal entity. No Spectrum dealer, distributor, agent or employee is authorized to make any modification or addition to this warranty.

NOTWITHSTANDING ANYTHING TO THE CONTRARY, SPECTRUM WILL NOT UNDER ANY CIRCUMSTANCES BE LIABLE FOR INDIRECT OR LIQUIDATED DAMAGES, INCLUDING CONSEQUENTIAL, INCIDENTAL AND SPECIAL DAMAGES. IN NO EVENT SHALL SPECTRUM'S LIABILITY, WHETHER UNDER CONTRACT OR WARRANTY, IN TORT OR OTHERWISE, EXCEED THE PURCHASE PRICE RECEIVED BY SPECTRUM FOR THE PRODUCT AT ISSUE AND "RECALL ACTION" EXPENSES. SPECTRUM SHALL NOT BE SUBJECT TO ANY OTHER OBLIGATIONS OR LIABILITIES, WHETHER ARISING OUT OF BREACH OF CONTRACT, WARRANTY, TORT (INCLUDING NEGLIGENCE AND STRICT LIABILITY) OR OTHER THEORIES OF LAW, WITH RESPECT TO PRODUCTS SOLD OR SERVICES RENDERED BY SPECTRUM, OR ANY UNDERTAKINGS, ACTS OR OMISSIONS RELATING THERETO.

Our Customer Service Department is ready to provide immediate attention to any questions, comments or concerns. They are available to answer your calls Monday through Friday from 7 am to 5 pm CST. In addition your product comments or concerns are welcome via e-mail at: spectrum@spectrumfurniture.com.

Warranty Table

Item	Warranty Period
• Adjustable Crank/Electric Desk Legs	• 1 Year
• Flat Panel Desk Gas Cylinders	
• Adjustable Height Chair Parts – including frames, gas cylinders, wood and plastic parts, and control handles Adjustable Height Chair Parts Casters	• 7 Years
• Adjustable Height Chair Upholstery	• 2 Years
• In-Stock Upholstery	• 2 Years
• Graded-In Fabrics and Customer Owned Material	• No Warranty
• Height Adjustable Columns and Lifts	• 1 Year
• General Use Casters	
• Electrical	
• Keyboard/Mouse Trays	
• Flat Panel Monitor Arm – General Parts	• 5 Years
• Flat Panel Monitor Arm – Gas Cylinders	• 2 Years
• Computer Desk Chassis	• 10 Years
• Cart Chassis	
• Lectern Chassis	



INDOOR ADVANTAGE GOLD
FURNITURE

