

AV in HE



Pivot Premier Workstation™

SPECTRUM
INDUSTRIES INC.



INNOVATIVE FURNITURE
connecting you with technology™

HIGHER ED FURNITURE INTEGRATION GUIDE BOOK

spectrumfurniture.com



AV in HE

FURNITURE INTEGRATION

Integrating technology into today's classroom continues to be in demand. Today's students have grown up with technology in their hands and will continue to demand that the newest technology is used to enhance classroom engagement and student participation. Instructors and students can work together to optimize learning in both lecture halls and small classrooms through careful integration of necessary technology. Implementation requires careful consideration to make sure current technologies are being used effectively.

Spectrum Industries has taken on their own initiative to make sure that the furniture you are using is helping you connect with that necessary technology. From easy to integrate lecterns to collaboration tables with power that helps facilitate communication to technology centers that bring knowledge right in front of their eyes, Spectrum is your partner for AV in HE.



COLLABORATION



InVision Active Learning Pod™



TechCenter™



Optio Collaboration Table™

DESK & TABLES



Flex Active Flip Tables™



Flex InSight Desk™



Pivot Jr Workstation™

LECTERNS



SLIM Lectern™



Freedom One eLift™



Honors™

OTHER FLEXIBLE SOLUTIONS



AV Credenza -Slim



Collectiv8 Charging Pillar™



Pivot Premier Workstation™

CHAIRS



OM5 Active Tasker



OM5 Active Cafe



OM5 Active Guest

THE CHOICE IS YOURS

For over 50 years, Spectrum has been developing flexible products and solutions for the educational market, including the higher education environment. Spectrum's quality and technology ready furniture can also fit into any collaboration space such as libraries and STEM labs, helping students and faculty connect to technology.

AV
in
HE

See our complete product line at spectrumfurniture.com

SPECTRUM
INDUSTRIES INC.



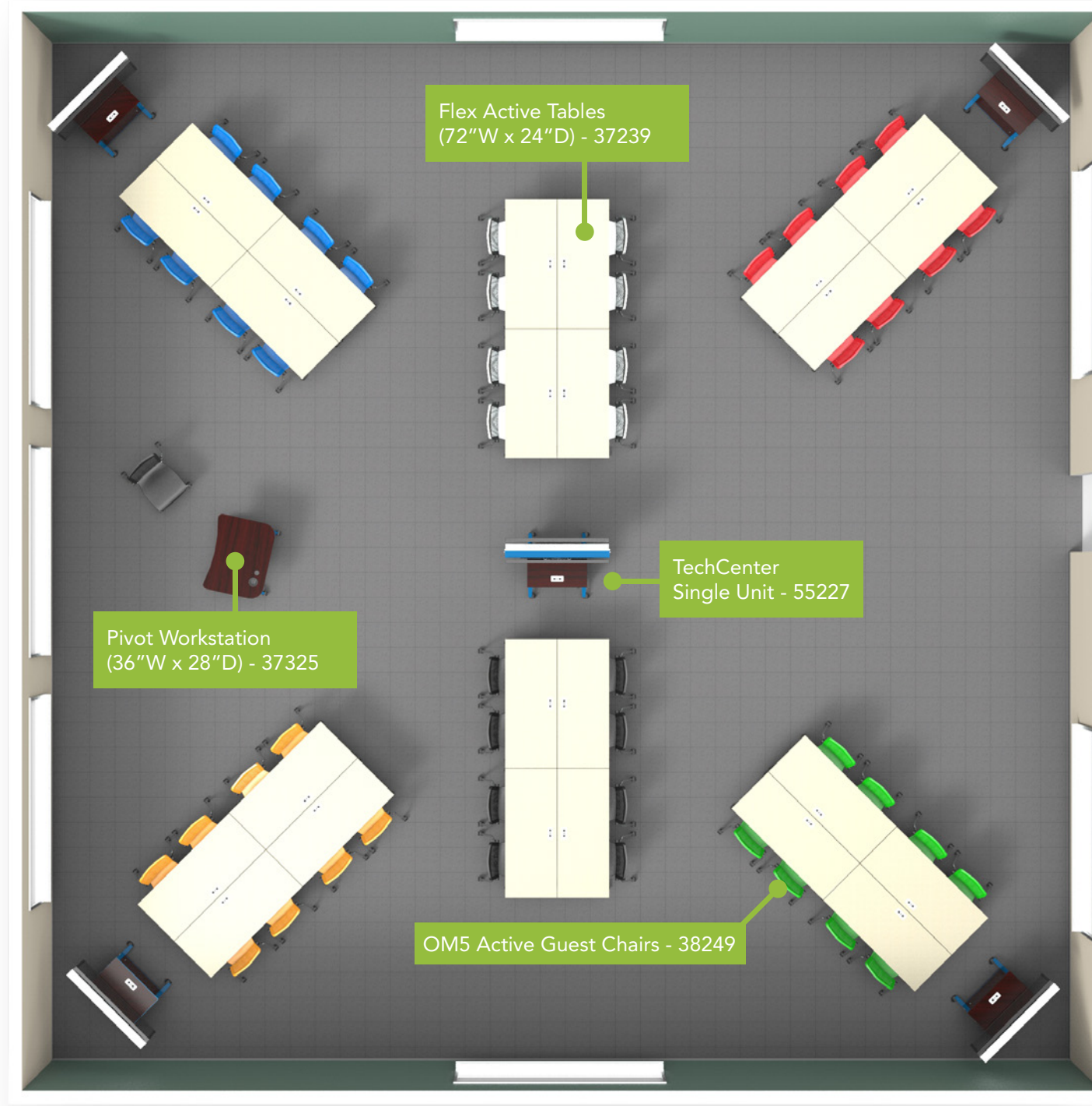
Double Unit Shown

TECH-CENTRIC

Group work in action! Utilize your space by creating multiple interactive workstations while allowing the instructor to engage with every student in the room. Let learning evolve around the TechCenter. With single or dual monitors, it's easy to position this with the Flex Active Tables or even the Optio Collaboration Table. The TechCenter is lightweight and can easily move around the classroom, so when you want to change things up, it's easy to do.

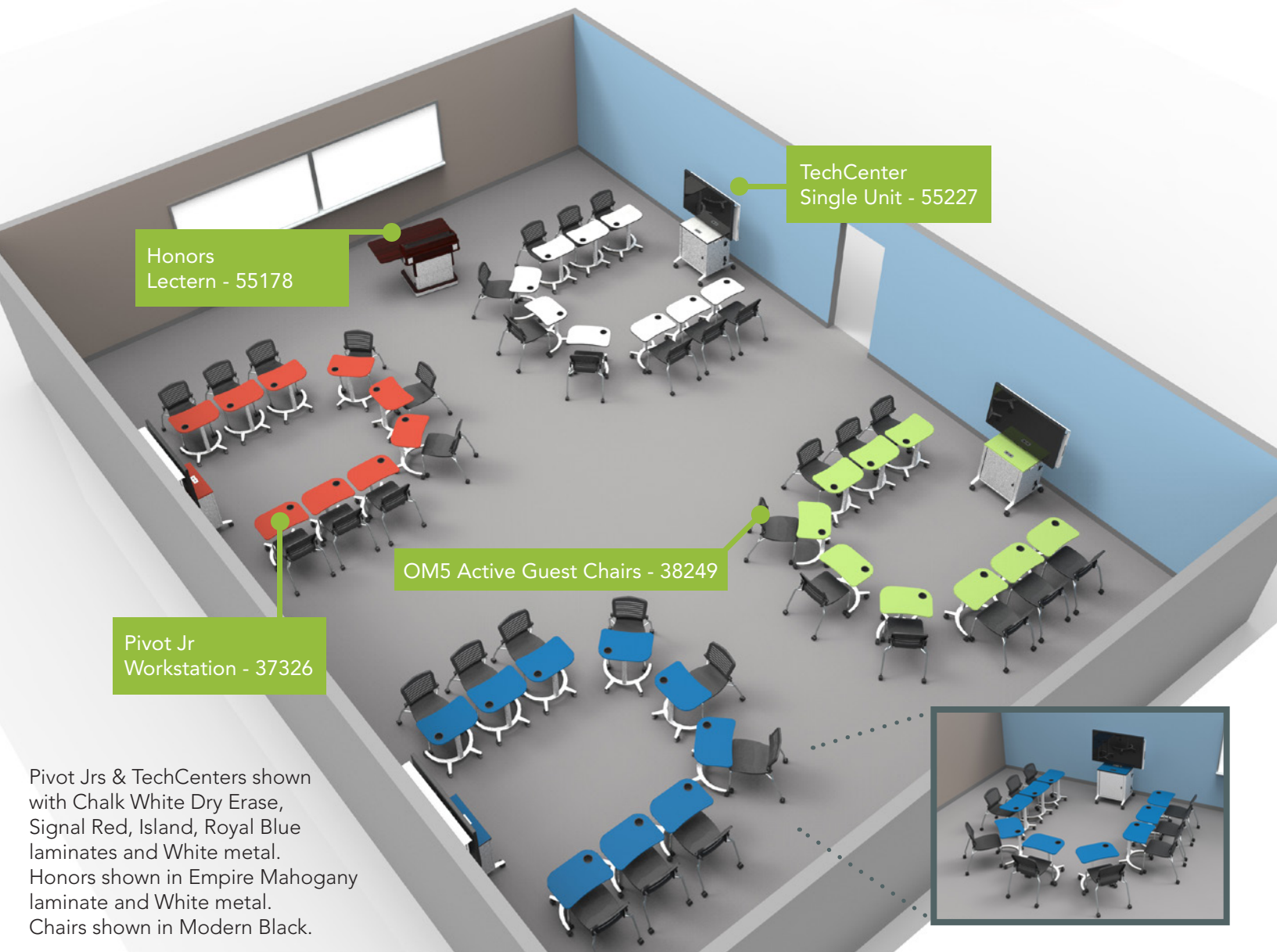


TechCenters Shown with Empire Mahogany laminate / Light Blue metal.
 Flex Active Tables shown with Misted Zephyr laminate / Light Blue metal.
 Pivot Workstation shown with Empire Mahogany laminate / Black metal.
 Chairs shown in Palladium Gray, Cardinal Red, Aurora Green, Sapphire Blue, Modern Black, Mandarin Orange.



COLLABORATION NATION

The ultimate in collaboration. The Pivot Jr is the most versatile desk that Spectrum has created to date. Easy to move, you can reconfigure your classroom depending on the subject and students. Put in pods of 4, rearrange into larger groups, or have students work individually, the Pivot Jr allows you to do to it all. Pair it with the TechCenter, and you can bring technology to the students' fingertips. The Honors Lectern creates the idea of the front of the classroom with the capability of holding necessary AV equipment.



Honors Lectern - 55178

TechCenter Single Unit - 55227

OM5 Active Guest Chairs - 38249

Pivot Jr Workstation - 37326

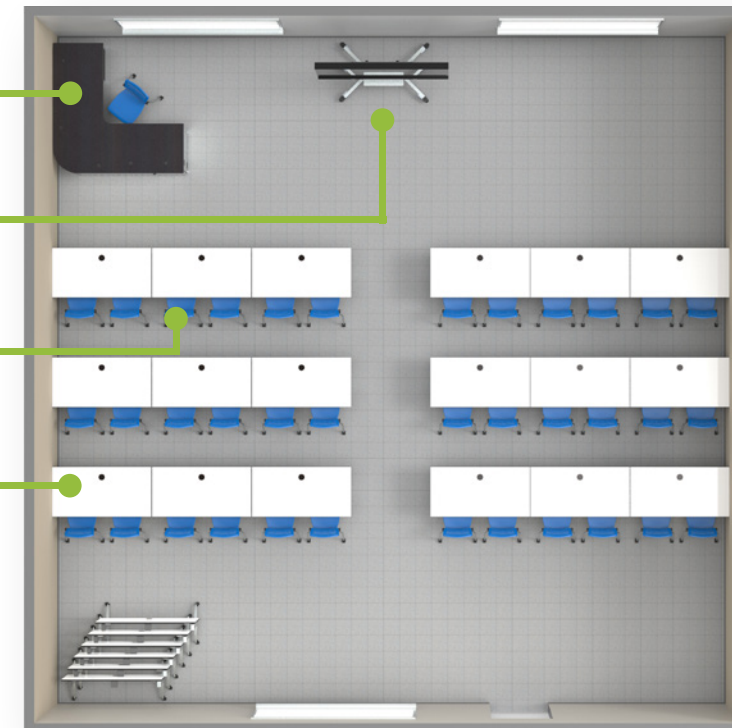
Pivot Jrs & TechCenters shown with Chalk White Dry Erase, Signal Red, Island, Royal Blue laminates and White metal. Honors shown in Empire Mahogany laminate and White metal. Chairs shown in Modern Black.

IMC Console #3 (29"H) - 68024

Interactive Display Stand *Concept*

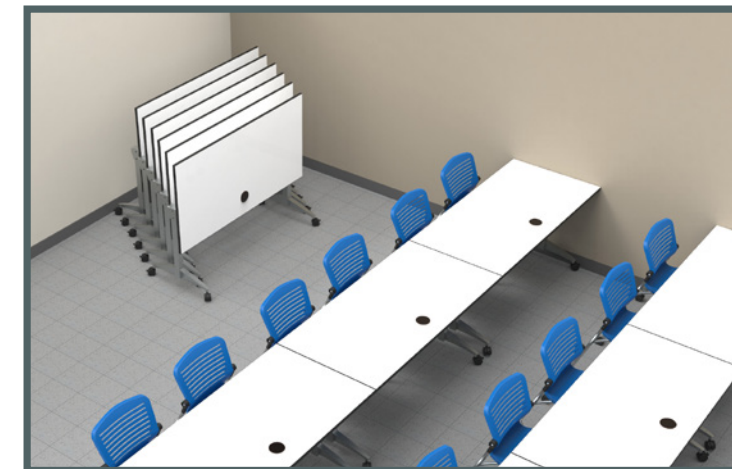
OM5 Active Guest Chairs - 38249

Flex Active Flip Table (60"W x 30"D) - 37319



FLIPN' FLEXIBLE

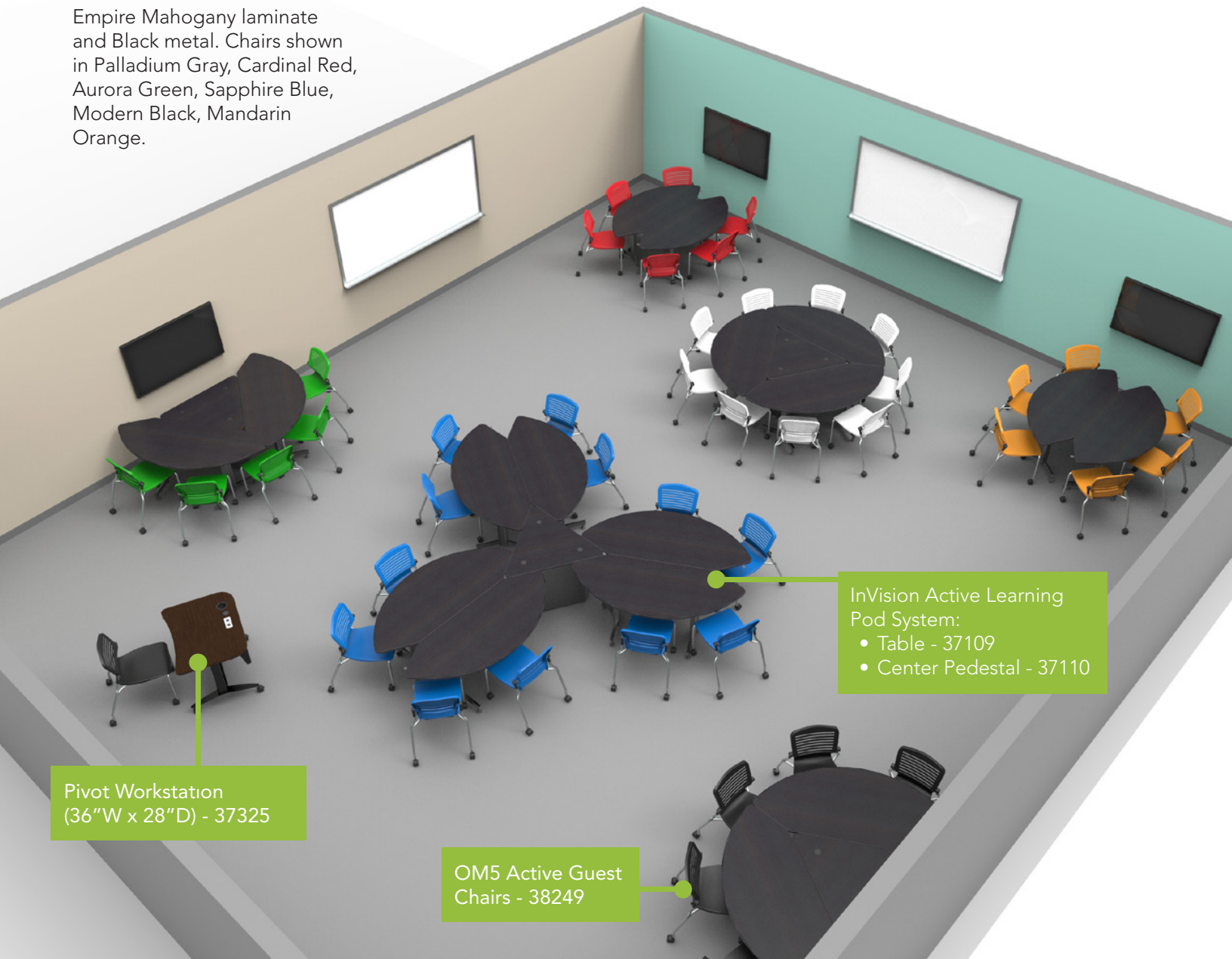
Take your classroom pedagogy from single lines of traditional desks to collaboration spaces with the Flex Active Flip Table. The Flex Active Flip flipping mechanism allows you to set-up tables in minutes, then nest and store together when not utilized. Add an IMC to the room and make it a flipn' AV powerhouse.



Flex Active Flip tables shown in Chalk White Dry Erase laminate and Silver Sparkle metal. With EM Wireless Charging. Chairs shown in Sapphire Blue.



InVision Active Learning Pods shown in Graphite Talc laminate and Silver Sparkle metal. Pivot Workstation shown in Empire Mahogany laminate and Black metal. Chairs shown in Palladium Gray, Cardinal Red, Aurora Green, Sapphire Blue, Modern Black, Mandarin Orange.



InVision Active Learning Pod System:
 • Table - 37109
 • Center Pedestal - 37110

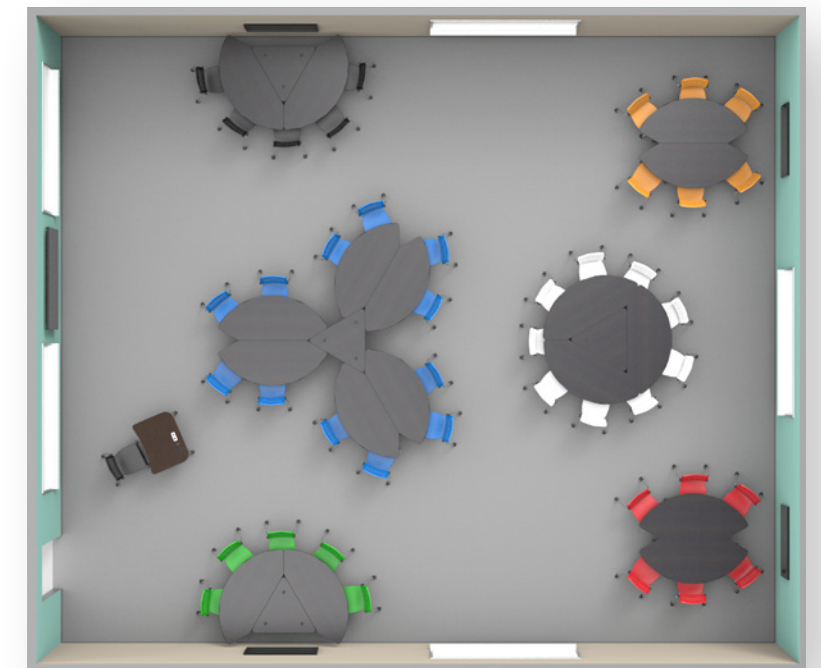
Pivot Workstation
 (36"W x 28"D) - 37325

OM5 Active Guest
 Chairs - 38249

integrated

POD-ILICIOUS

Spectrum's InVision Active Learning Pod System™ connects collaborative teams with the latest technologies to provide extremely effective collaborative learning furniture. The round table design encourages interactive communication while the central pedestal delivers the technology that helps turn individual ideas into team-based solutions. And get creative with where to place the tables for ultimate flexibility.



See our complete product line at spectrumfurniture.com





TechCenter
Double Unit- 55227

Freedom One eLift
Lectern - 55357

Flex InSight Desks
72"W x 24"D - 38979

COMPUTER-TO-TRADITIONAL

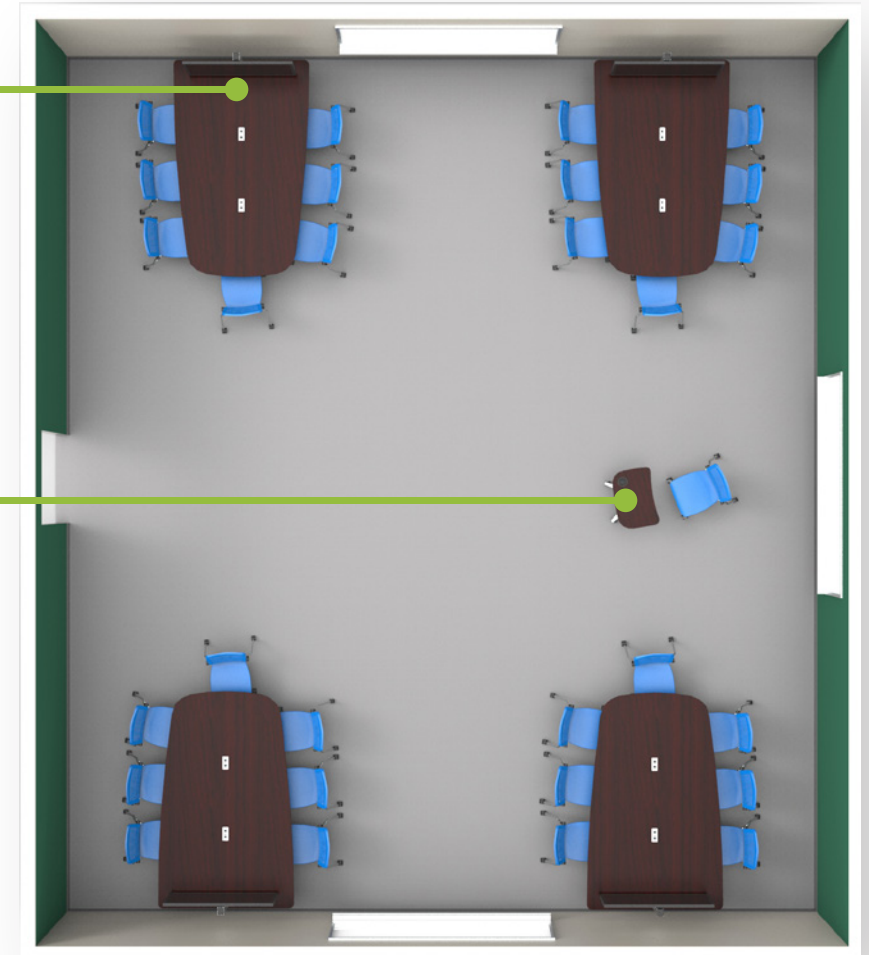
The Flex InSight desk allows a quick transition from the traditional desk to computer lab creating a multi-functional space. With the InSight, the monitor, keyboard, and mouse safely store inside the desk, and the InSight provides a classic classroom environment and even has 19" of available space for taking notes. The Flex InSight creates a space that is in demand and is versatile for any group throughout the day.



Products shown in Fusion Maple laminate and Champagne Metallic metal.
Chairs shown in Sapphire Blue.

Optio Collaboration
Table - 37132

Pivot Jr
Workstation - 37326



OPTIO-MUM COLLABORATION

Optimize your classroom work flow with Spectrum's Optio Collaboration tables. Fully mobile. Fully integrateable. Fully engage your students and take your pedagogy to the next level with these tech ready tables. Available with AV channels, display mounts and a host of power options, the Optio Collaboration Table is an easy way to integrate your space.



Products shown in Empire Mahogany laminate and Champagne Metallic metal.
Chairs shown in Sapphire Blue.



Keep your devices fully charged at all times. The EM Wireless Charging Pad can be added to most tables and lecterns. Go to spectrumfurniture.com/wireless to learn more!

9 WAYS TO MAKE AV in HE INTEGRATION EASY

AN AV GUIDE TO SPECTRUM INDUSTRIES

Integration of technology should go hand-in-hand with planning out what furniture you're going to use in your higher ed spaces. From collaborative tables to AV ready lecterns, it's important to know what technology you'll be using so you can plan both at the same time.



Pivot Premier Workstation™



1 CUSTOMIZATION THROUGH CONFIGURATION

We all like choices in our lives. The product configurator on spectrumfurniture.com allows you to get the product you want, all within standard lead times. For lecterns, choose if you want flip-up shelves, an overbridge control console, cutouts for AV equipment, and much more. For collaboration tables, choices range from choosing your size, shape, wheels or casters, to the type of cord channel.

You may think customization and configuration on products would produce long lead times, but at Spectrum this problem doesn't exist. With the choice to define what your needs will be for a product, we can customize a product just for you. With our strategic configurations, you are able to get exactly what you need, and most importantly, fulfill orders in a timely manner.

On any product page, click on "Request a Quote" and the configurator will appear. By completing a series of simple steps, your specification can be sent to an Inside Sales Rep and you'll receive a quote in a very short period of time!



2 EASY INTEGRATION

Assembling a product or trying to fix equipment within a piece of furniture can sometimes be difficult. But with Spectrum's products, furniture is designed with the integrator in mind.

On products such as our lecterns, doors can be taken off and front panels can be removed to access internal equipment. The Overbridge Control Console also allows for an ergonomic and clean installation of control and cable management systems.

Plus, Spectrum offers a variety of lecterns with variable rack cube sizes. For example, the Freedom One eLift offers a Rack Cube with 18 RU front and 18 RU rear. The Director Lectern, as part of the Media Manager Series, can hold two rack cubes that both hold 13RU front and 13 RU rear.

3 STANDARD CUTOUTS

We listen to our customers and strive to provide a satisfying experience when purchasing our product. We noticed that integrators were typically ordering similar cutouts for their lecterns and collaboration tables. To make the process easier, these are now standard and allow quicker lead times.

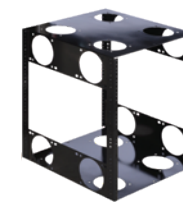
Our lecterns offer custom and standard cutouts to help support AV and IT technology. The Overbridge Control Console is where this magic happens. Technology solutions from major suppliers such as Crestron and Extron fit inside our standard cutouts. Technology can change quickly, and should your needs change over time a new Overbridge panel can be ordered with updated cutouts and be installed in the existing lectern.

The same rings true for our Optio Collaboration Table. The most popular cut out is our power module that provides both AC and USB power, but you can also choose from a variety of other manufacturers such as Crestron, Kramer and Extron. You can fit up to two cutouts per table and choose the location.

4 ORDER A RACK CUBE SEPARATELY

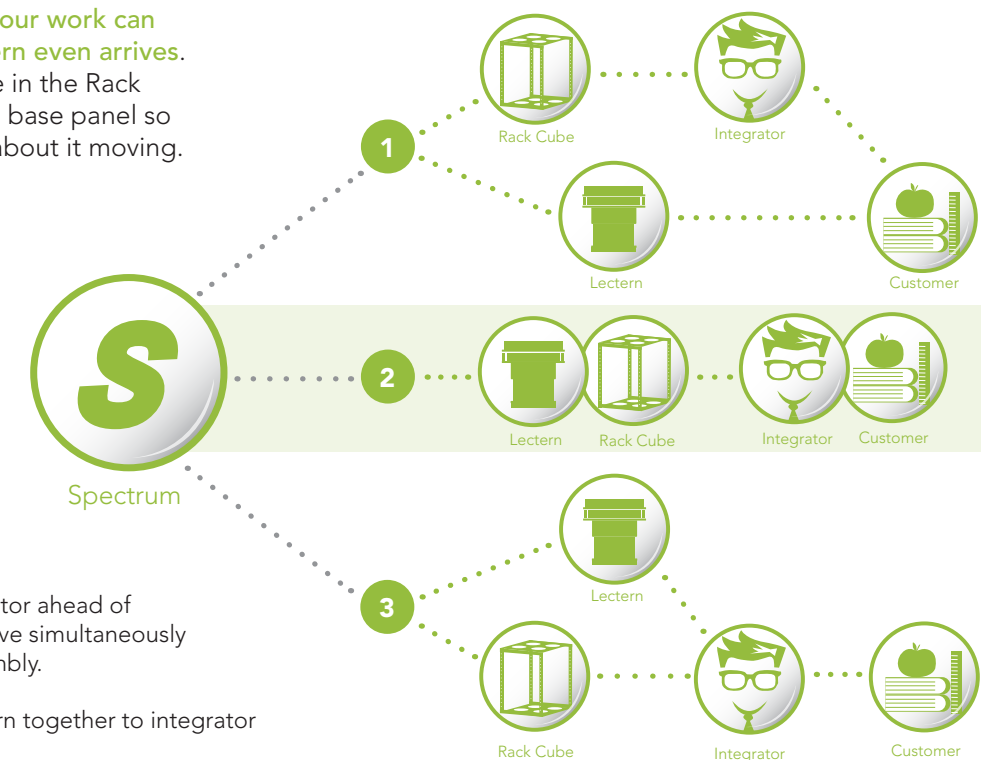
We understand that your time is valuable and we want to make sure you're working as efficiently as possible. Why wait until your lectern comes to start installing your equipment? You can order your Rack Cube separately and start installing AV equipment immediately.

This means that **75% of your work can be done before the lectern even arrives.** Once it does, simply slide in the Rack Cube and secure it to the base panel so you never have to worry about it moving.



RACK CUBE EARLY ROUTING BENEFITS

1. Ship Rack Cube to integrator ahead of shipping lectern. Both arrive simultaneously at customer for final assembly.
2. Ship Rack Cube and lectern together to integrator or customer.
3. Ship Rack Cube ahead of lectern to integrator. Integrator assembles, ships final product to customer.





5 ADA COMPLIANT PRODUCTS

As a premier furniture manufacturer, Spectrum designs its products to fit the needs of its customers. With the classroom evolving and becoming more interactive, Spectrum has put an emphasis on creating lecterns and collaboration tables to meet American with Disabilities Act (ADA) requirements.

Height adjustability and proper leg clearance are components of our lecterns that adhere to ADA regulations. You'll find that the Freedom One eLift and the Freedom XRS Elite Lecterns are the most popular ADA lecterns.

Education is a student-focused enterprise, so it's understandable that their needs are the primary consideration when it comes to designing and furnishing classrooms and laboratories. A number of our tables, including the Flex Active, Flex Activ Flip, Flex InSight and the Optio Collaboration Tables were built with ADA compliance in mind.



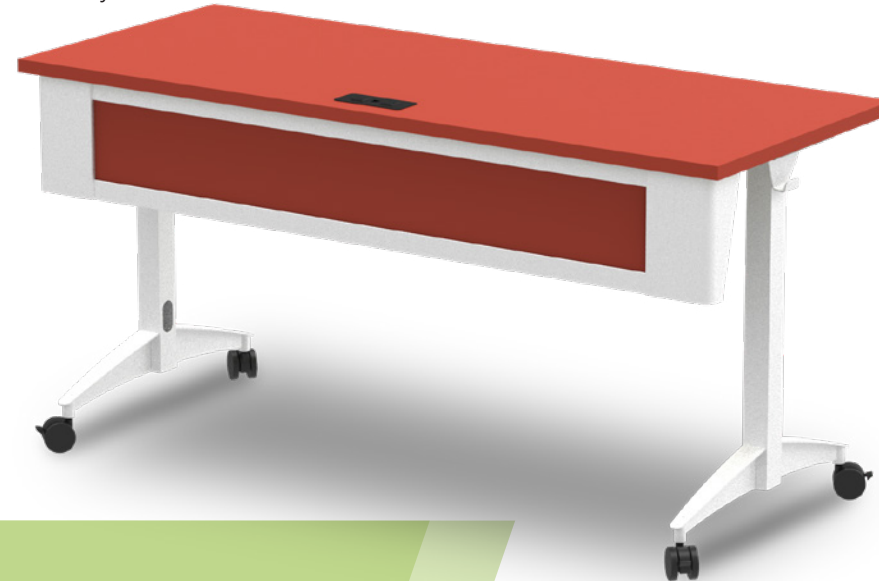
6 OPTIONS FOR CUSTOM LOGOS



Branding is very important on a college campus. Show your school pride with a personalized, custom cut logo panel on your lecterns. Logos are laser cut through a sheet metal panel or door and logo backers are offered in matching laminate of your lectern, black or white, or can be printed which allows specific colors or images on logo backers. Because the logo panel is removable on most lecterns, it can be shipped separately or to retro-fit previously purchased lecterns.

7 VARIETY OF LAMINATES AND METALS

With the expansion of our Expressions Finishes, you can now make your classroom as expressive as your students. Thirteen new colors were recently added to the Expressions line now making up over 25 different laminate options. Five new laminate colors include royal blue, island (green), café sienna, navajo red, and gray. Not only were laminate colors added, but eight new metal finish colors were added as well, including Spectrum blue, yellow, signal red, light blue, orange, lime green, white, and warm gray. With all of these new color options, you can now personalize your furniture even more to match your space!



8 ON-SITE DEMOS

Trying to decide what furniture to purchase online can be difficult, but Spectrum puts the customer first! Request an on-site demonstration, at any time, to ensure you are getting the perfect product. This allows you to touch and feel the product, see all the options available, and in some cases, even put it in the classroom to see how it looks. This allows you to see first hand if the product will be easy to integrate and supports the needs you are looking for.

Request a demo at spectrumfurniture.com/demo

9 FREE FREIGHT

What you see is what you get. That includes the price when working with Spectrum! All pricing shown is the delivered price. That's right, free freight. There are no freight charges to the contiguous United States for truck-height and tailgate deliveries. Additional services including life-gate service, inside delivery, and additional manpower will be quoted separately. Spectrum tries to make doing business with us easy, and that includes giving you the final price right up front.

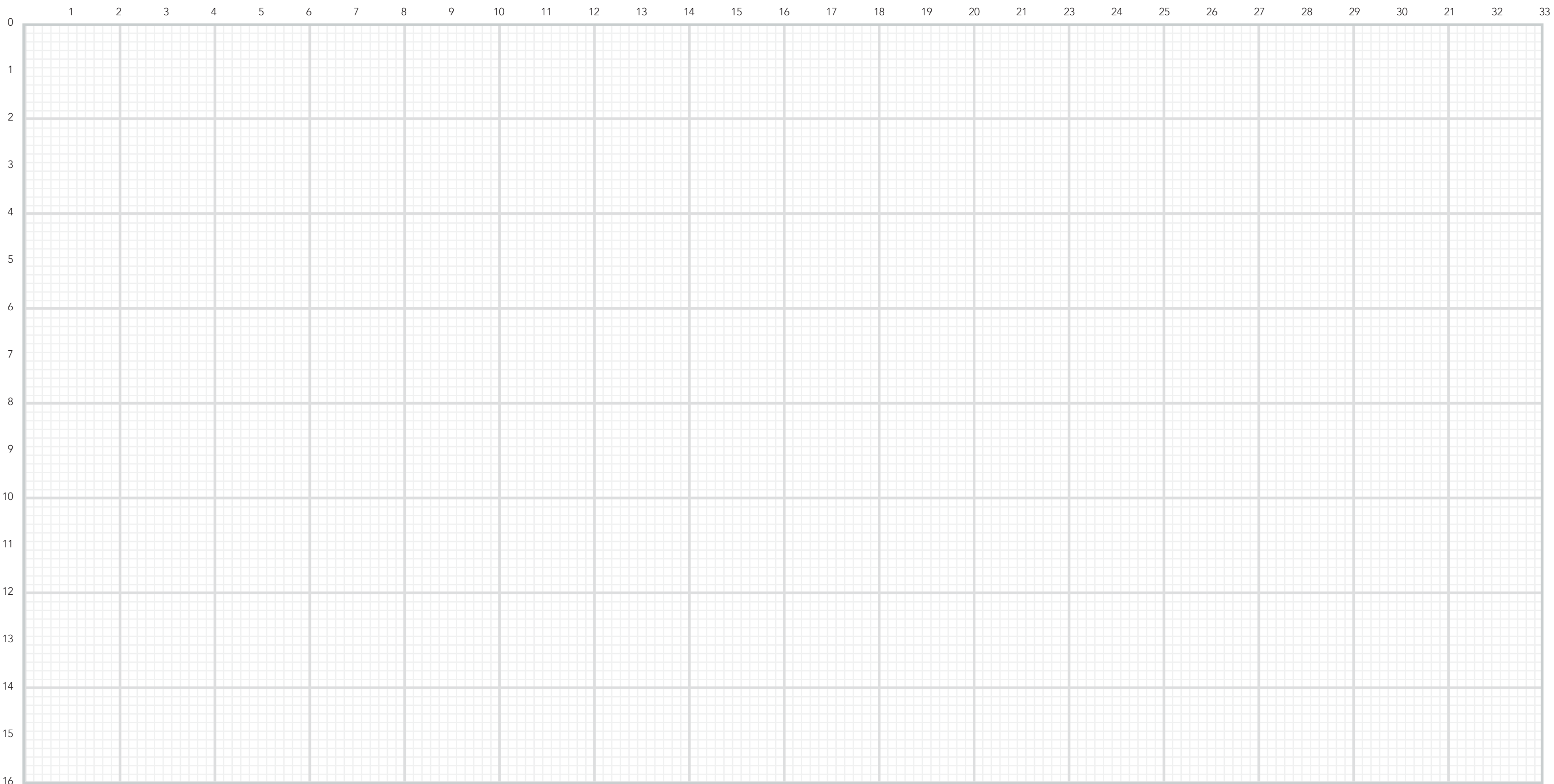


INTEGRATION

Learn more about **every way** Spectrum can make your AVinHE intergration as easy as possible, visit: spectrumfurniture.com



Sketch out your own AV Ready Higher Ed Space!



Ben Jones - Vice President, Sales
407-242-6256 - bjones@spectrumfurniture.com

Denise Parkhurst - Inside Sales Manager
715-738-2147 - dparkhurst@spectrumfurniture.com

Nicholas Young - Territory Manager
916-281-7671 - nyoung@spectrumfurniture.com
Karen Brunstad - Inside Sales
715-738-2128 - kbrunstad@spectrumfurniture.com

Chad Miskowiak - Territory Manager
480-372-1886 - cmiskowiak@spectrumfurniture.com
Karen Brunstad - Inside Sales
715-738-2128 - kbrunstad@spectrumfurniture.com

Ben Rassier - Territory Manager
715-944-9035 - brassier@spectrumfurniture.com
Nancy Repka - Inside Sales
715-738-2189 - nrepka@spectrumfurniture.com

TBD - Territory Manager
Dale Volrath - Inside Sales
715-738-2157 - dvolrath@spectrumfurniture.com

Drew Cave - Territory Manager
972-679-9519 - dcave@spectrumfurniture.com
Theresa Thompson - Inside Sales
715-738-2139 - tthompson@spectrumfurniture.com

Jennifer Herrick - Inside Sales
715-738-2119 - jherrick@spectrumfurniture.com

Julie Hancock - Territory Manager
630-781-4796 - jahancock@spectrumfurniture.com
Nancy Repka - Inside Sales
715-738-2189 - nrepka@spectrumfurniture.com

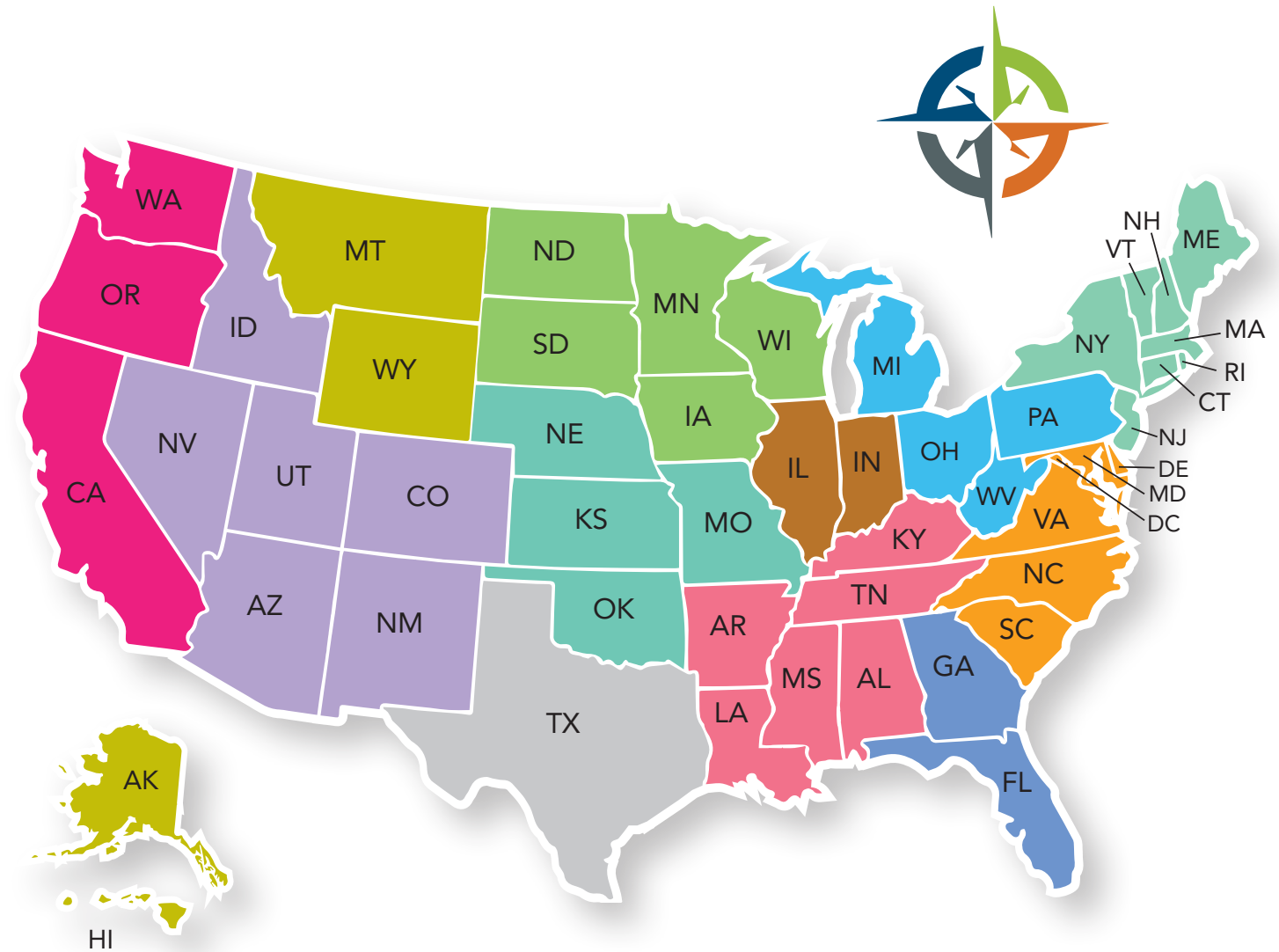
Tyler Lee - Territory Manager
615-674-9446 - tlee@spectrumfurniture.com
Theresa Thompson - Inside Sales
715-738-2139 - tthompson@spectrumfurniture.com

Larry Lindenauer - Territory Manager
518-744-8229 - llindenauer@spectrumfurniture.com
Kelli Jaquish - Inside Sales
715-738-2173 - kjaquish@spectrumfurniture.com

Brian Lambert - Territory Manager
715-404-9004 - blambert@spectrumfurniture.com
Jennifer Herrick - Inside Sales
715-738-2119 - jherrick@spectrumfurniture.com

Mark Dotson - Territory Manager
804-869-9015 - mdotson@spectrumfurniture.com
Dale Volrath - Inside Sales
715-738-2157 - dvolrath@spectrumfurniture.com

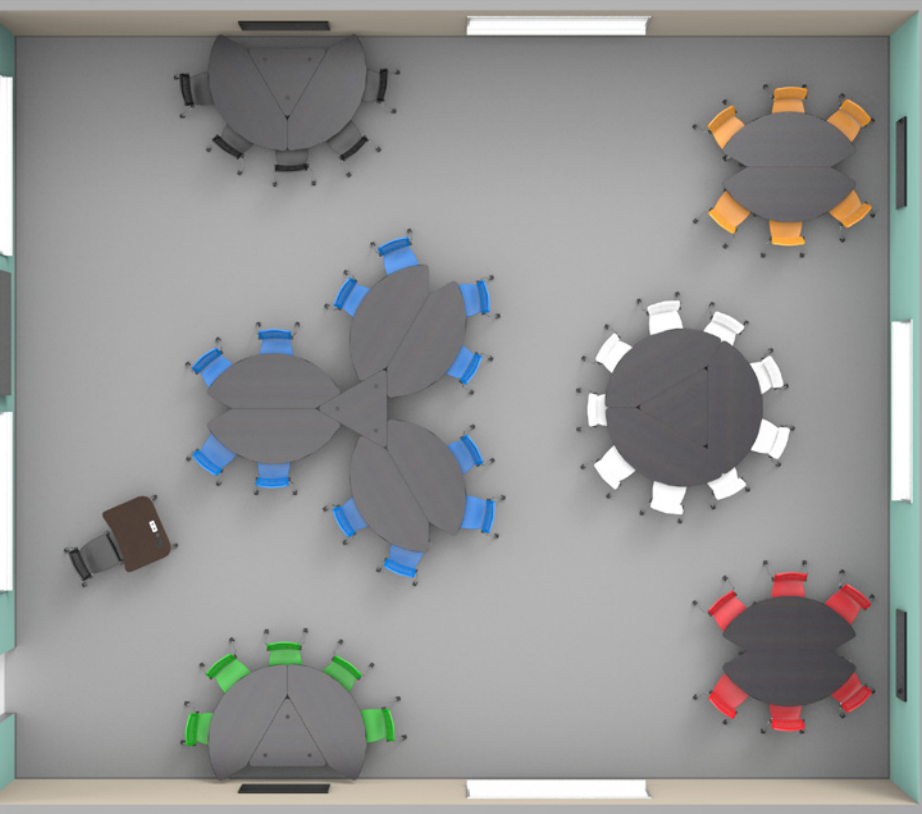
Jonathan Gray - Territory Manager
407-408-7955 - jgray@spectrumfurniture.com
Kelli Jaquish - Inside Sales
715-738-2173 - kjaquish@spectrumfurniture.com



Your Sales Team.

Spectrum is all across the country, which means we are right around the corner from you! Let our team help you integrate your HE with expert guidance and knowledge in the educational furniture market. Contact your Territory Manager or Inside Sales Rep today!

Not sure where to start? Visit us online at spectrumfurniture.com!



HIGHER ED AV
FURNITURE
INTEGRATION
GUIDE BOOK

SPECTRUM
INDUSTRIES INC. 

925 First Avenue, Chippewa Falls, Wisconsin 54729

800-235-1262 / 715-723-6750

spectrumfurniture.com

020620