

NEW

## Freedom XRS Elite Lectern™

Instructor preferred,  
integrator inspired,  
designer approved

Lectern adjusts from 32"-40"  
and is easy to service,  
wire, and incorporate with  
AV technology

We listened to you,  
and the result is:

- Elegant, functional, durable
- Ergonomic and whisper-quiet lift

Completely redesigned and reengineered

NEW  
JULY  
2015!

NOW AVAILABLE WITH NEW LAMINATE COLOR CHOICES!



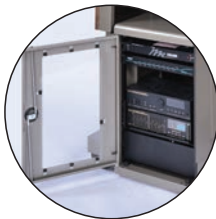
ERGONOMIC  
WHISPER-QUIET  
LIFT SYSTEM



OVERBRIDGE CONTROL  
CONSOLE™ CAN BE  
CONFIGURED ON RIGHT OR LEFT



EASY-TO-WIRE ACCESS  
THROUGH  
OPEN BACK PANEL



REMOVABLE DOOR  
OPENS LEFT OR RIGHT



LECTERN 55289  
SHOWN WITH ALL OPTIONS LISTED BELOW

## Freedom XRS Elite Lectern™

### PRODUCT DIMENSIONS

LECTERN	62"W x 30"D x 32"-40"H
EQUIPMENT RACK	14RU front, 10RU back

### OPTIONS (WHEN ORDERING SEPARATELY)

55297	RACK CABINET
55333	FLIP-UP SHELF
55334	KEYBOARD TRAY
55389	LOGO PANEL

### WARRANTY

10-year lectern
2-year electrical



(pending)

### Extreme Rack Cabinet

- Lockable rack cabinet can easily be positioned on right or left
- Rack cabinet has 14 rack-units in front and 10 rack-units in back
- Removable back panel and lockable side hatches make it easy to wire
- Equipment rack cabinet can be shipped to a separate location for integration by IT/AV staff

### Safe, Convenient Design

- Ergonomic and ADA-complaint lectern
- Quick release door hinges allow rack cabinet door to be flipped when repositioned from left to right
- Replaceable steel toe kick creates a polished appearance
- Full modesty panel for a finished look

### Easy to Make It Your Own

- Improve ergonomics with optional monitor arm
- Customizable front logo panel (optional)
- Heavy-duty adjustable flip-up shelf adds 16" of worksurface
- Overbridge Control Console™ can be configured on the right or left and has removable panel for easy AV integration

### Engineered for Durable Performance

- All steel chassis makes for a strong and durable lectern
- Lectern has a lift capacity of over 500 pounds
- Whisper-quiet, powerful lift system raises and lowers in seconds
- Superior chimney-effect ventilation in rack cabinet
- Generous cable management channel in lectern





# Build Your Perfect Lectern

Questions?  
Please contact Spectrum customer service today!  
800-235-1262



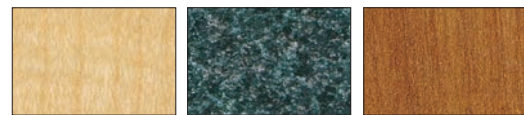
Simply follow each step below to generate your Freedom XRS Elite Product Order Number.  
Record the letter or number code from each step in the corresponding boxes in this order generating chart.

FREEDOM XRS ELITE	1	2	3	4	5	6	7	8	9	10	11	
	LAMINATE	EDGE COLOR	METAL FINISH	LECTERN	L/R	RACK	SHELF	KEYBOARD	LOGO	#OF COVES	COVE COLOR	CUTOUT
5 5 2 8 9												

## 1 Choose Your Laminate and Edge Band Color

### STANDARD LAMINATE EXPRESSIONS

14-DAY QUICK-SHIP



Fusion Maple with matching Edge Band | Indigo Organix with Black Edge Band | Wild Cherry with matching Edge Band

ORDER CODE **FM FM** | ORDER CODE **IO BK** | ORDER CODE **CH CH**

### ADDITIONAL DESIGNER LAMINATE EXPRESSIONS

28-DAY SHIPPING



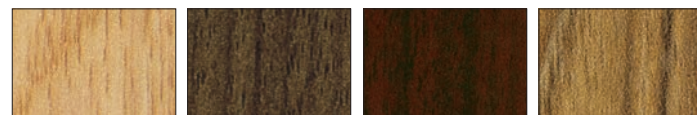
Black with matching Edge Band | Bronze Legacy with matching Edge Band | Desert Zephyr with matching Edge Band | Morro Zephyr with matching Edge Band | Natural Tigris with matching Edge Band

ORDER CODE **BK BK** | ORDER CODE **BL BL** | ORDER CODE **DZ DZ** | ORDER CODE **MO MO** | ORDER CODE **NT NT**



Misted Zephyr with Silver North Sea Edge Band | Pewter Mesh with matching Edge Band | Steel Mesh with matching Edge Band | Twilight Zephyr with matching Edge Band | White Fiesta with Black Edge Band

ORDER CODE **MZ SN** | ORDER CODE **PM PM** | ORDER CODE **SM SM** | ORDER CODE **TZ TZ** | ORDER CODE **WF BK**



Castle Oak with matching Edge Band | Colombian Walnut with matching Edge Band | Empire Mahogany with matching Edge Band | Nepal Teak with matching Edge Band

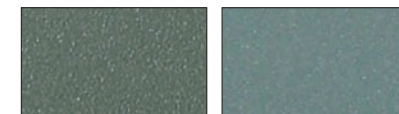
ORDER CODE **CK CK** | ORDER CODE **CW CW** | ORDER CODE **EM EM** | ORDER CODE **NP NP**

## 2 Choose Your Metal Finish Color

### STANDARD METAL COLOR EXPRESSIONS

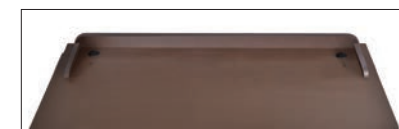


ORDER CODE **B** Black | ORDER CODE **CM** Champagne Metallic



ORDER CODE **D** Dark Gray | ORDER CODE **S** Silver Sparkle

## 3 Choose Your Lectern Style



ORDER CODE **S1**  
Surround (No Cutouts)



ORDER CODE **B2**  
Overbridge Right (Recommend Keyboard on Left)



ORDER CODE **B3**  
Overbridge Left (Recommend Keyboard on Right)

## 4 Choose Your Instruction Orientation

Positioning of wiring panel and keyboard tray



ORDER CODE **R** Right | ORDER CODE **L** Left

## 5 Choose Your Rack Cabinet Option



ORDER CODE **0** No Rack Cabinet  
ORDER CODE **3** Rack Cabinet

## 6 Flip-Up Shelf Option (MATCHES LAMINATE)

ORDER CODE **0** No Flip-Up Shelf



ORDER CODE **2** Flip-Up Shelf, Right | ORDER CODE **3** Flip-Up Shelf, Left | ORDER CODE **4** Flip-Up Shelves, Right and Left

## 7 Keyboard Tray Option (MATCHES METAL COLOR)

ORDER CODE **0** No Keyboard Tray



ORDER CODE **1** Factory Installed Keyboard Tray

## 8 Logo Panel Option (MATCHES METAL & LAMINATE COLORS)



ORDER CODE **0** No Logo Panel



ORDER CODE **1** Factory-Installed Custom Logo Panel  
(will increase lead time and additional charges will apply)

## 9 Cove™ Power Module Option



ORDER CODE **0** No Cove™ Power Module  
ORDER CODE **1** One Cove™ Power Module (available in surround only)

## 10 Choose Your Cove™ Power Module Color



ORDER CODE **0** No Cove  
ORDER CODE **B** Black Cove  
ORDER CODE **S** Silver Cove

## 11 Choose Your Custom Cutout Option

(Custom Cutouts will increase lead time and additional charges will apply)

ORDER CODE **0** No Custom Cutout | ORDER CODE **3** Overbridge Panel Custom Cutout  
ORDER CODE **2** Worksurface Custom Cutout | ORDER CODE **4** Worksurface and Overbridge Custom Cutout