

# Monitor Arms

## Flat Panel Monitor Arm



**95509 B**  
(Black)

- Works with any standard VESA mount monitor.
- Choose a design then select by monitor weight.
- Mount to work surface through  $\frac{3}{8}$ " hole or use the clamp provided with each arm.

**95509** Heavy duty monitor arm  
(for monitors weighing from 12.5 lbs to 29.5 lbs)  
(available in Black)

**95512** Light duty monitor arm (not shown)  
(for monitors weighing from 13.5 lbs or less)  
(available in Black)

## Evo Flat Panel Monitor Arm



**95514 B**  
(Black)



**95515 S**  
(Silver)

- This arm has the same stringent specifications as the rest of our monitor arms

**95514** Heavy duty monitor arm  
(for monitors weighing from 13 lbs to 21 lbs)  
(available in Black or Silver)

**95515** Light duty monitor arm  
(for monitors weighing from 6 to 13 lbs or less)  
(available in Black or Silver)

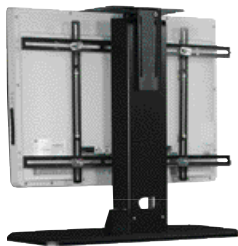
## Flat Panel Dual Monitor Arm



**95516 B**  
(Black)

- Works with any standard VESA mount monitor.
- For monitors weighing from 4 - 19lbs (per monitor)
- Works with 19" and some 20" monitors
- Mounts to work surface through  $\frac{3}{8}$ " hole or use the clamp provided with each arm.
- Available in Black or Silver

## Universal Flat Screen Stand



**55278 B**  
(Black)

Flat screens come in many shapes and sizes but this stand is versatile enough to accommodate them. It will hold up to a 50" screen.

**Note:** If the 55278 stand is not used on the Flat Screen Cart the customer will have to drill the holes to mount on other product.



**SPECTRUM**  
INDUSTRIES INC.

For additional product information, technical specifications, or pricing please call 1-800-235-1262 or email [spectrum@spectrumsfurniture.com](mailto:spectrum@spectrumsfurniture.com) for assistance.