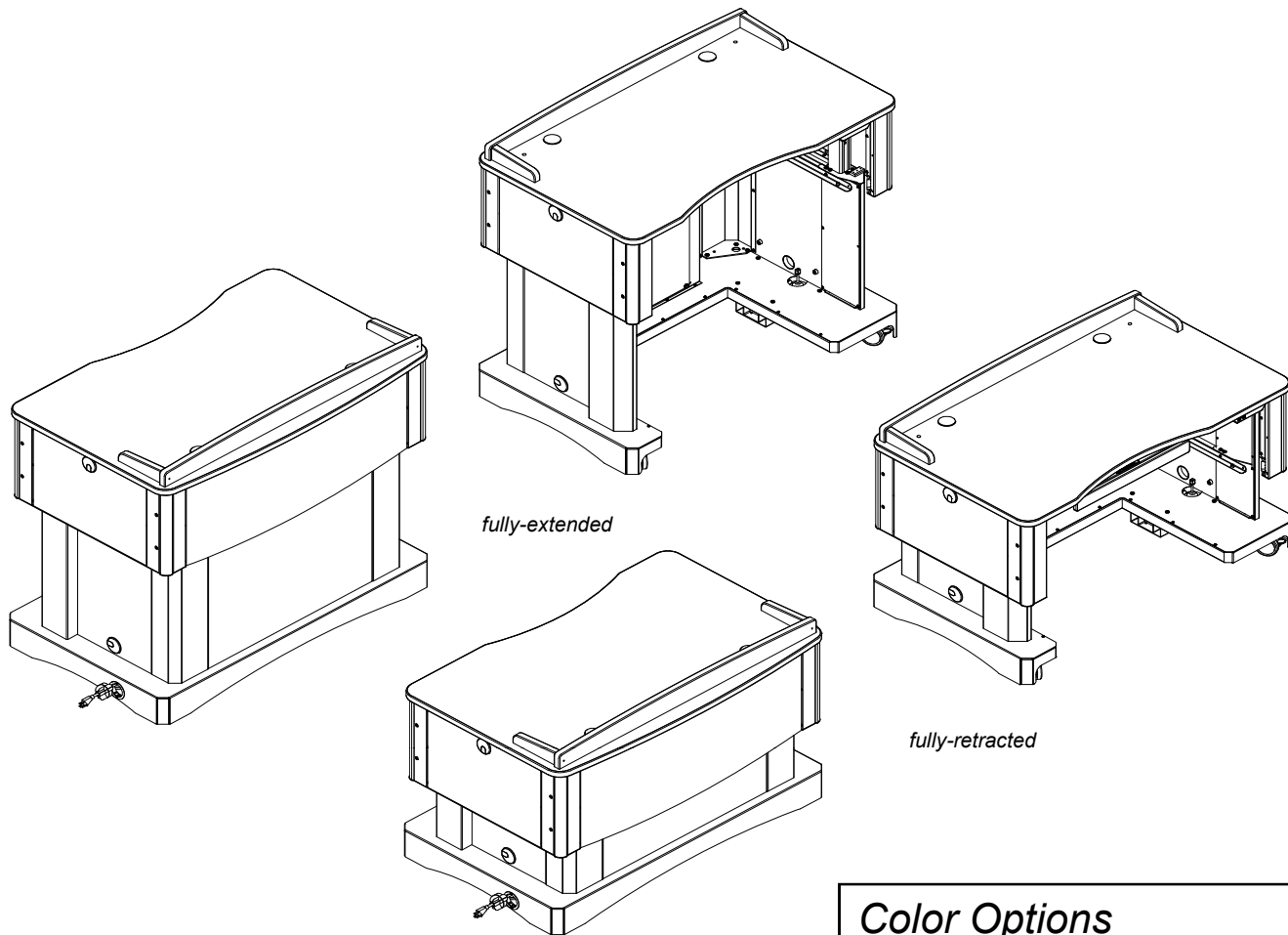


# Freedom Lectern

55300 - Freedom Lectern



The Freedom Lectern electrically raises and lowers to accommodate users of various sizes-including wheelchair users. This ADA-compliant lectern can be used from a seated or standing position and can be customized with several optional accessories for any lecture or presentation situation.

## Features and Benefits

- Adjustable-height worksurface electrically-adjusts from 28"-40" high
- Scratch and impact-resistant 1<sup>1</sup>/<sub>16</sub>" high-pressure laminate worksurface
- Worksurface provides ample room for papers, laptops, projectors, and most peripherals and has left and right pre-drilled mounting holes for easy installation of optional monitor arms
- Four 3" twin-wheel swivel, locking casters provide mobility
- Stylish caster surround hides casters
- Standard 15' retractable 15-amp power cord reel provides quick and easy power access
- Standard six-outlet power strip with 3' cord, surge protection (1,000 joules) and lighted on/off switch can be used for peripherals or other accessories
- Solid hardwood worksurface surround provides privacy and styling
- Worksurface and internal grommets keep wires and cords manageable
- Optional folding shelf with grommet provides an additional worksurface when needed
- Optional adjustable CPU sling provides the ability to mount an internal tower CPU
- Optional pull-out worksurface / tray provides a convenient additional workspace
- Guaranteed to be free of all defects in materials and workmanship with a 10-year warranty

## Construction

- The worksurface and base panel are constructed from 1<sup>1</sup>/<sub>16</sub>" thick industrial-grade composite board with .030 high-pressure laminate on one face, and a balancing phenolic backer on the opposing face
- Metal components consist of 16 and 20-gauge steel
- Worksurface edges are covered with 3mm vinyl
- All metal components are finished with a scratch-resistant powder coat epoxy
- Solid wood corner trim and surround
- Each Freedom Lectern is factory-assembled, packaged, and shipped on its own skid

## Color Options

Standard laminate / Color combinations:

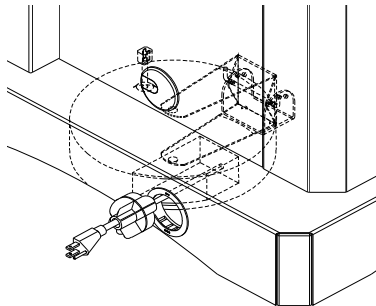
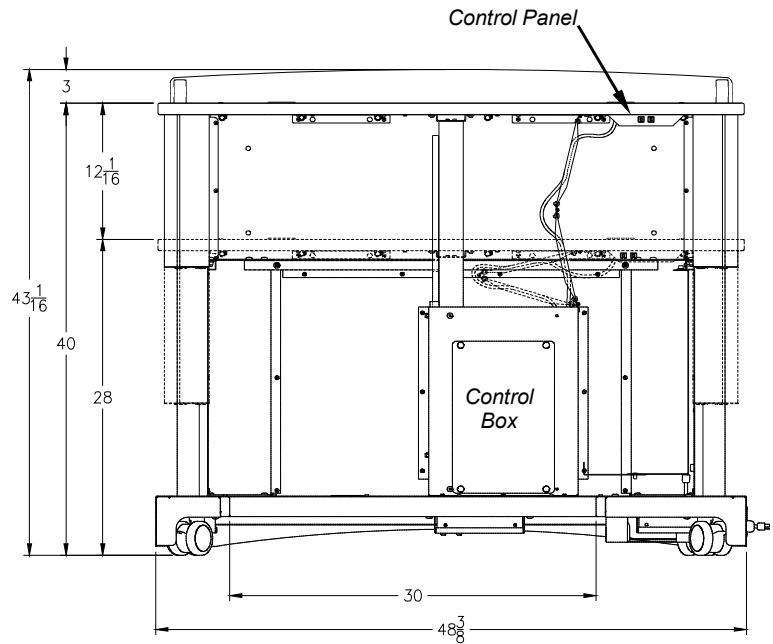
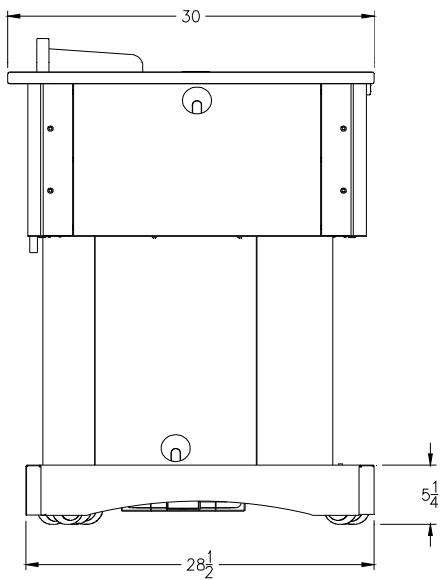
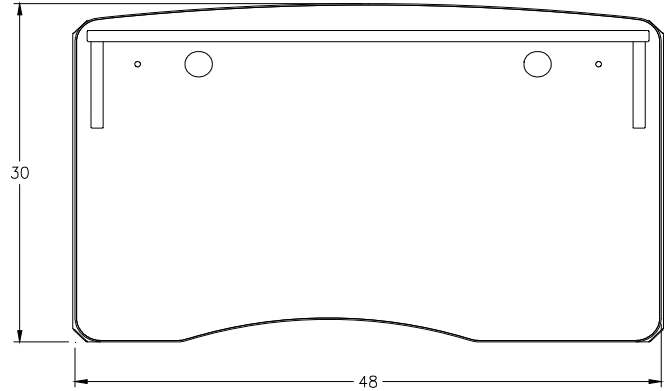
- Wild Cherry / Black (CHB)
- Indigo Organix / Black (IB)

Standard color combination refers to the quickest deliverable product color combination. Custom laminates and color combinations are available-additional lead-times and up-charges may apply.

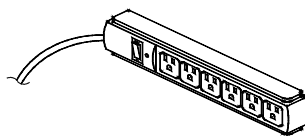
## Capacity

- Overall dimensions: 48"W x 30"D x 43<sup>1</sup>/<sub>16</sub>"H (fully-extended)
- Adjustable worksurface height: 28"-40"H
- ADA-compliant knee and leg clearance:  
38<sup>3</sup>/<sub>8</sub>"W (without CPU) x 22<sup>1</sup>/<sub>2</sub>"D x 39"H  
(fully-extended without pull-out worksurface)
- The 3" twin-wheel swivel casters have a weight capacity of 165 lbs each  
(660 lbs max total unit weight)
- Standard 15' retractable 15-amp power cord reel
- Lift mechanism:  
inverter: 120V @ 60Hz, max output 400 watts, 3.3 amps  
motors: 18V / 10 amps  
max load: 800N (180 lbs)
- Standard 15' retractable 15-amp cord reel w/ breaker and 12ga cord
- Meets or exceeds all ANSI-BIFMA test standards
- Features and specifications subject to change without notice.
- **Unit weight:** 260 lbs
- **Shipping weight:** 310 lbs (approx)

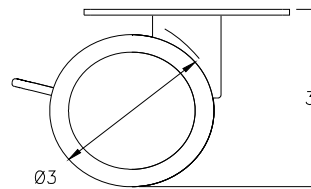
**55300**  
**Freedom Lectern**  
(shown fully-extended)



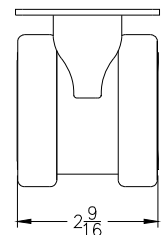
Standard 15-amp Retractable Cord Reel  
(inboard-mounted w/ 15' cord)



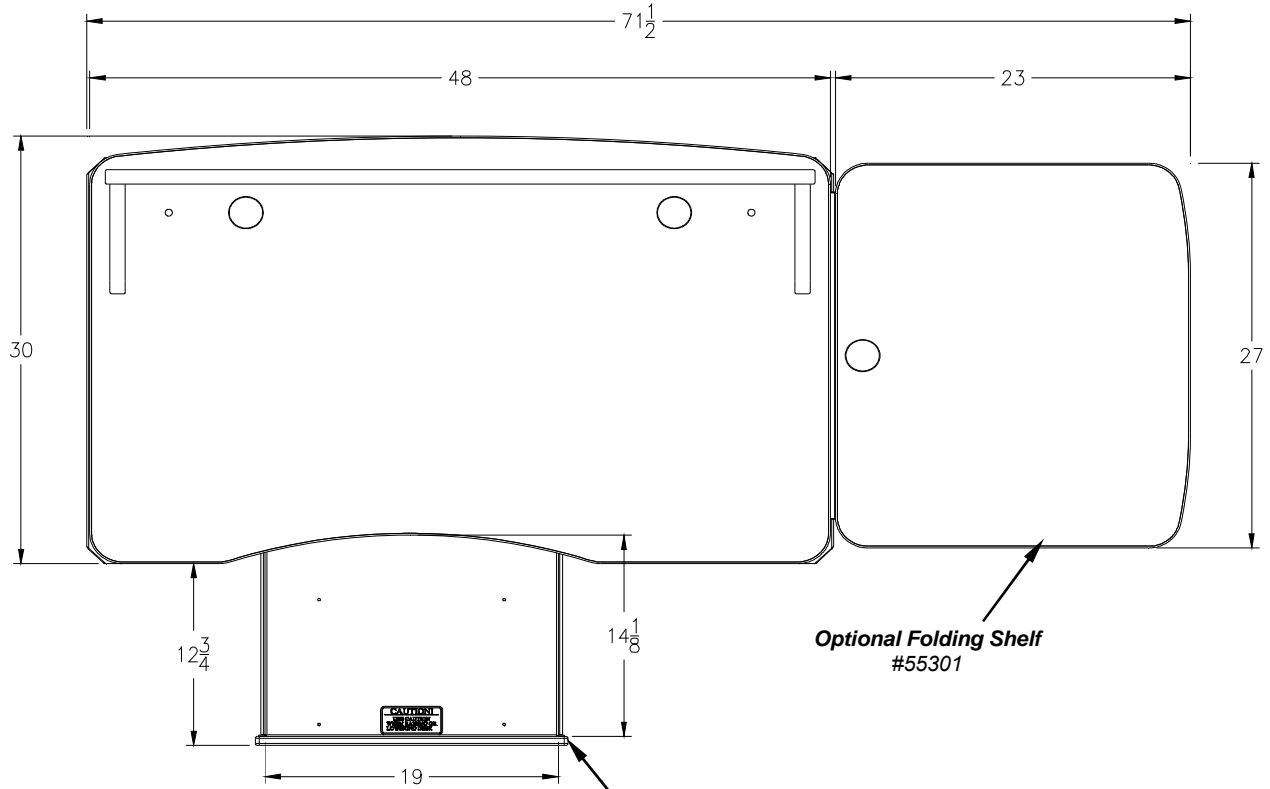
Standard 6-Outlet Power Strip  
w/ 3' cord  
(11<sup>5</sup>/<sub>16</sub>"W x 1<sup>1</sup>/<sub>16</sub>"D x 1<sup>3</sup>/<sub>16</sub>"H)



3" Twin-wheel casters



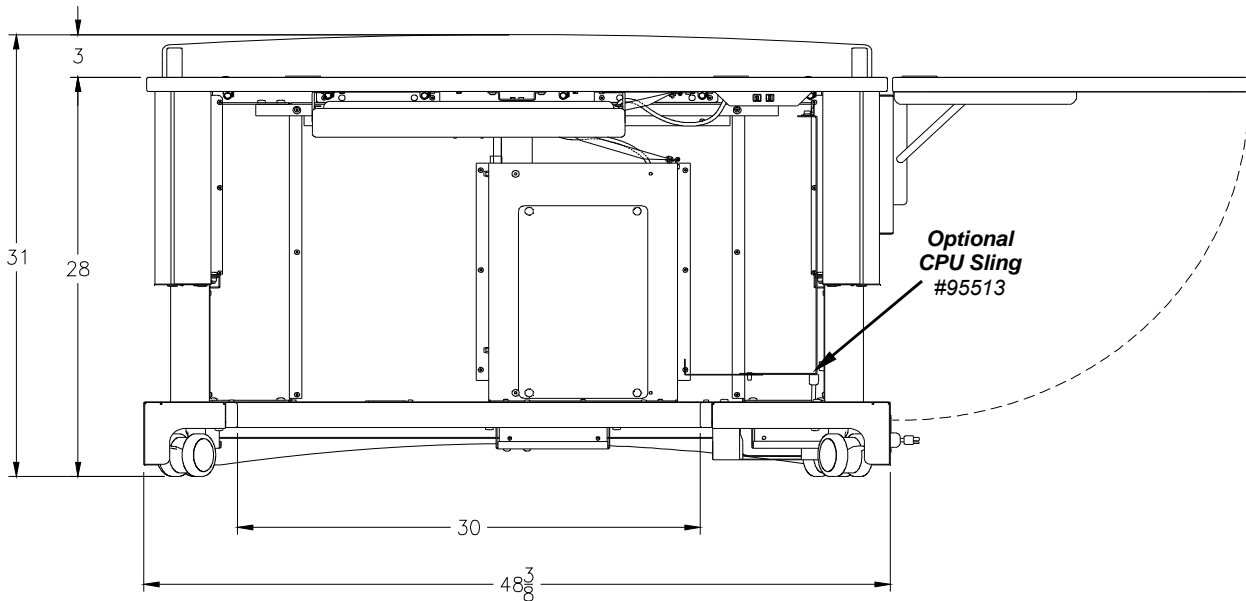
**55300**  
**Freedom Lectern**  
 (shown fully-retracted with optional accessories)



**Note:** Any modified worksurface cut-outs should be reviewed by Tech Service to ensure clearance of brackets, keyboard slides, or other objects under the worksurface.

**Optional Pull-out worksurface / Tray #55302**

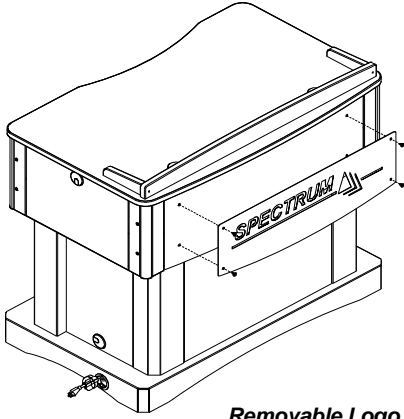
**Optional Folding Shelf #55301**



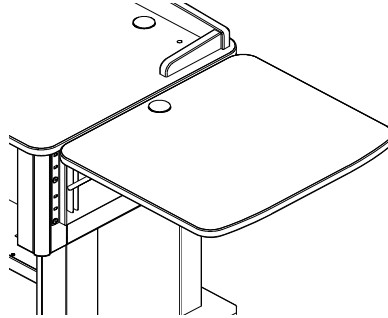
**Optional CPU Sling #95513**

**Designed for indoor use only**  
 Spectrum carts and lecterns are designed and constructed for indoor use only. Moving or using outdoors or on excessively rough surfaces may cause damage to the cart or casters and may void the warranty. If an outdoor application is desired, please contact us to discuss potential custom design solutions.

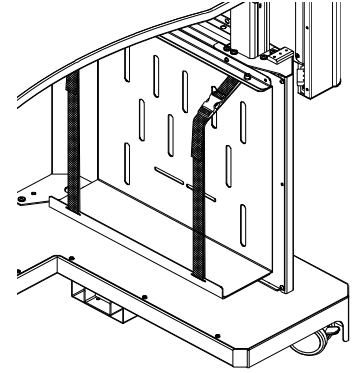
# Freedom Lectern Options



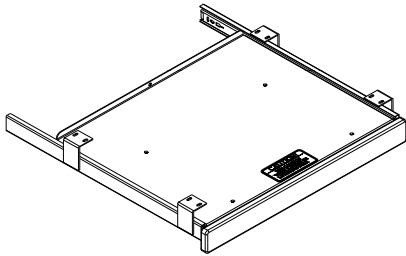
**Removable Logo Panel/Plate**  
(shown on student-side)  
55303



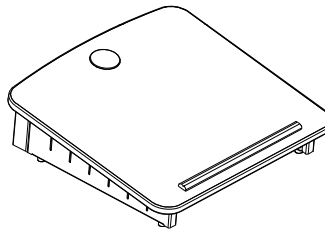
**Folding Shelf**  
mounts on left or right-side  
23"W x 27"D  
(150 lbs max load)  
55301



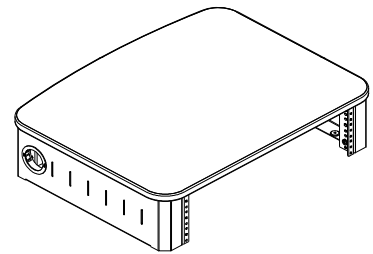
**Adjustable CPU sling**  
for CPU's measuring  
5"-8 1/2"W x 18"D x 18"H  
95513



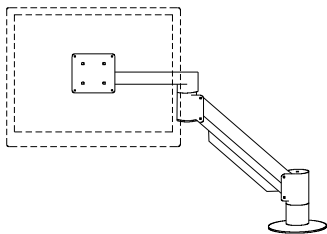
**Pull-out Worksurface / Tray**  
19 1/16"W x 14 3/16"D  
55302



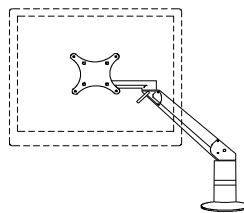
**Podium Riser**  
18"W x 17 13/16"D  
95002



**Overbridge w/ Rack Rail (3RU)**  
24"W x 18 3/4"D x 6 1/4"H  
95003



**Flat Panel Monitor Arm**  
95512 (for monitors weighing 4-14.5 lbs)  
95522 (for monitors weighing 9-24 lbs)  
95509 (for monitors weighing 12-29 lbs)



**Evo Flat Panel Monitor Arm**  
95523 (for 15"-19" monitors weighing 6-13 lbs)  
95524 (for 19"-21" monitors weighing 13-21 lbs)