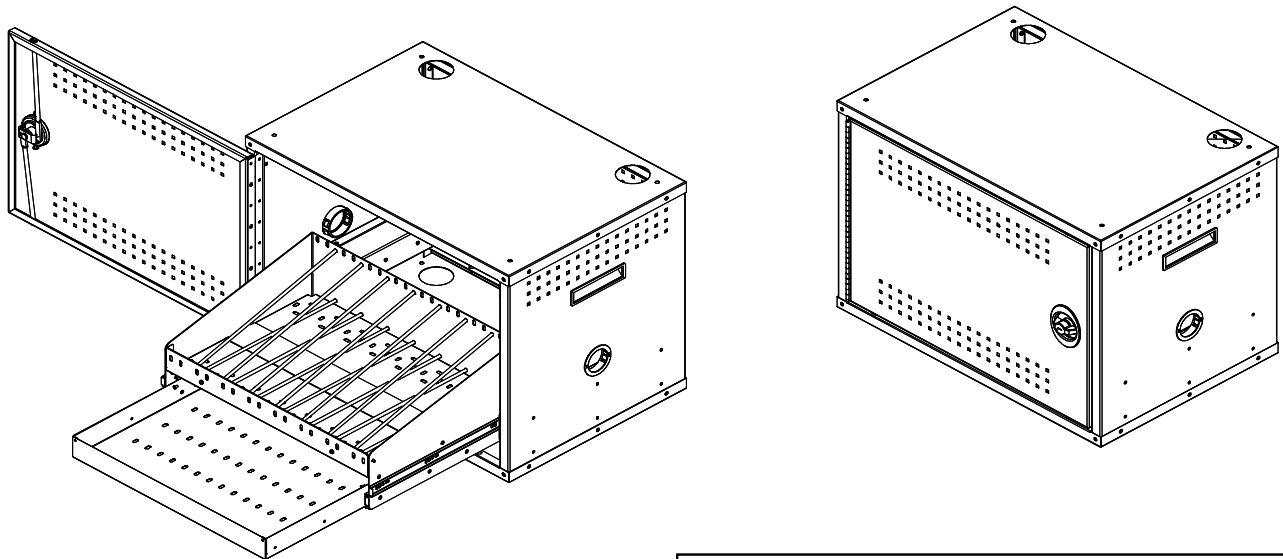


Secure Laptop Locker V2

55101 - Secure Laptop Locker V2
55103GW - Secure Laptop Locker V2 w/ anti-microbial finish



Color Options
Standard Color:
-Black (B)
-Grey/White (55103GW) (anti-microbial finish-upcharge applies)

Standard color refers to the quickest deliverable product color. Custom colors are available-but additional lead-times and up-charges may apply. Call 800-235-1262 for further information.

The Secure Laptop Locker is a versatile solution designed to securely store and charge up to 8 laptop computers. The locker storage modules are interchangeable with Harbor Cart modules, which allows the locker to be configured to store other valuable equipment. The stationary lockers are stackable up to 3 units high, and provide ventilation to keep equipment cool.

Features and Benefits

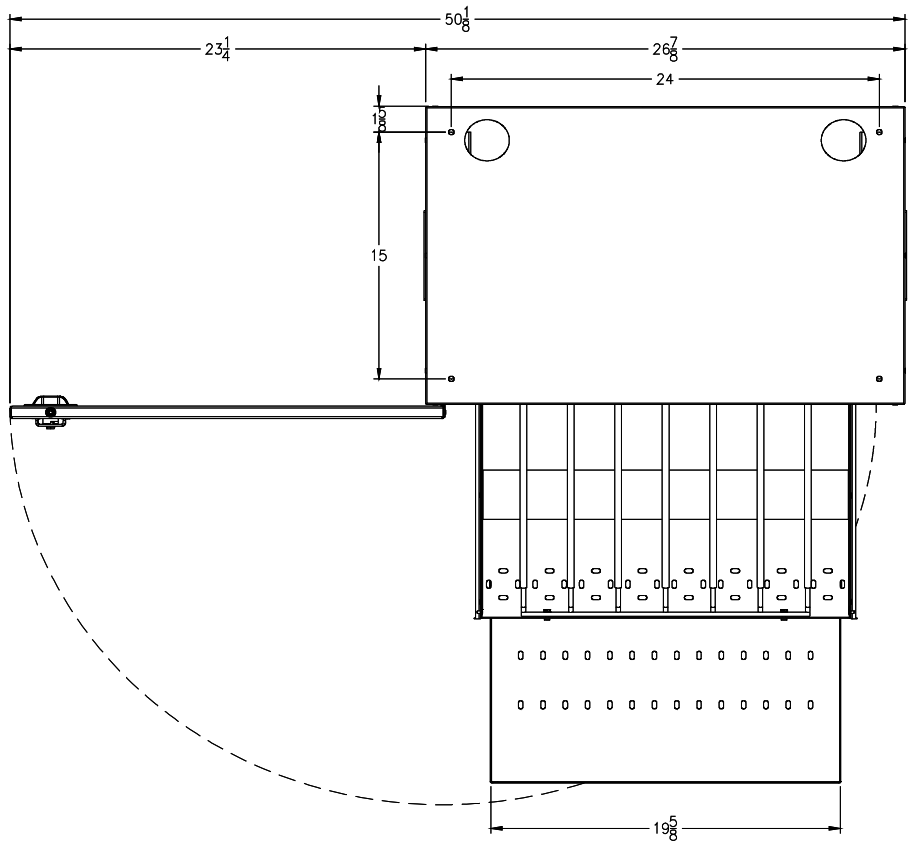
- A slide-out storage/recharging module with built-in cord management holds up to 8 laptops making laptops easy to retrieve and put back
- Velcro tie-downs, and cord management drawer located under the laptop storage module help keep wires and cords organized
- Module has rubber pad to protect laptops
- Double-bolt, keyed, locking front door provides security and easy-access
- Symmetrical door can be installed to be hinged from the left or right-side
- Includes one eight-outlet insured power strip with surge-protector and 12' cord standard
- Cord management grommets throughout unit keeps cords organized and allow easy cord passage
- Ventilated door and side panels help dissipate heat
- Side handles assist when positioning or relocation is necessary
- Lockers are stackable up to three high allowing additional laptop storage to be added as needed
- Optional work surface provides a finished look and writing surface for single units
- Guaranteed to be free of all defects in materials and workmanship with a 10-year warranty

Construction

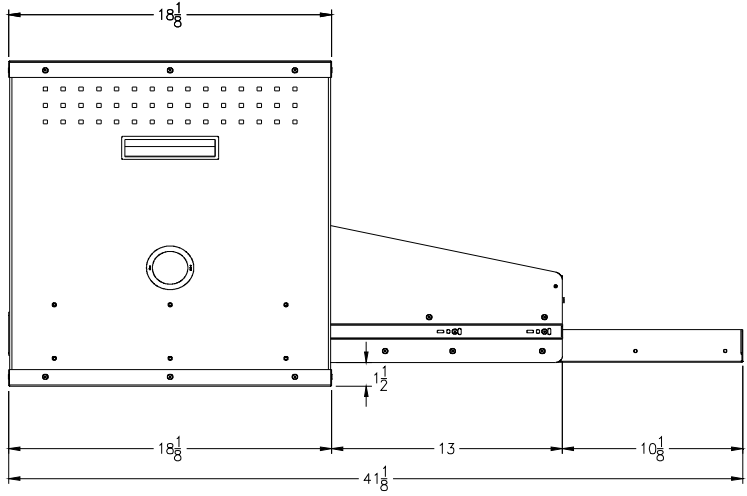
- Metal components consist of 16-gauge and 20-gauge steel
- Vented side panels and door are made of 16-gauge steel
- All metal components are finished with a scratch-resistant powder coat epoxy
- Each Secure Laptop Locker is factory-assembled

Capacity

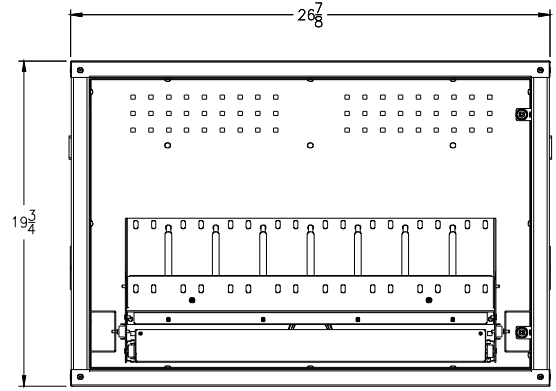
- Overall dimensions: 26⁷/₈"W x 18¹/₈"D x 19³/₄"H
- Each unit accommodates one storage module
- The storage module has 8 compartments and accommodates laptops up to 21¹/₄"W x 14³/₄"D x 14"H
- Module extends 14" on full-extension slides having a weight capacity of 100 lbs each
- Cord/Wire Management drawer is 19³/₄"W x 14¹/₄"D x 2"H
- Lockers are stackable up to 3 units high. For security and stability reasons, lockers must be fastened together and bolted to either the floor or the wall with the included hardware.
- Meets or exceeds all ANSI-BIFMA test standards
- Features and specifications subject to change without notice
- **Unit weight:** 73 lbs
- **Shipping weight:** 75 lbs



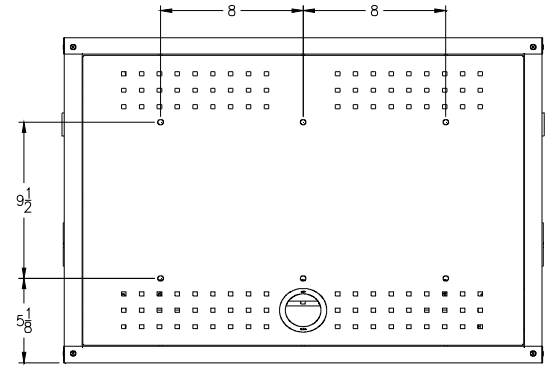
Top View



Side View



Front View
(shown with door removed)



Rear View

Note: The secure laptop locker needs to be permanently and securely attached to a wall, desk or floor to prevent tipping while the loaded laptop storage module is pulled out. Mounting holes located in the back panel are for stabilizing the unit(s) (up to 3 high only) and are 16" on-center to match most wall construction stud spacing. Be sure screws are anchored securely to studs or other solid portion of wall.

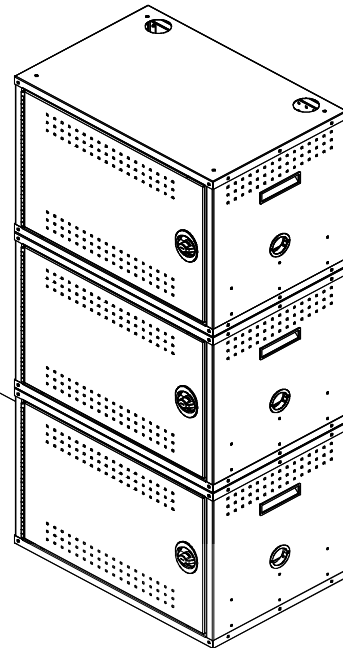
It is the customer's responsibility to use adequate fasteners for the specific work surface or floor type the unit will be mounted to.

WARNING

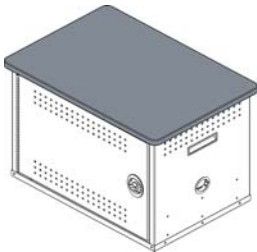
THE SECURE LAPTOP LOCKER IS NOT INTENDED OR DESIGNED TO SOLELY BE HUNG ON A WALL. THE MOUNTING HOLES IN THE BACK PANEL ARE FOR STABILIZING PURPOSES ONLY WHEN A STACK OF (UP TO 3) LOCKERS IS BEING USED.

CAUTION

The Secure Laptop Locker can store up to 8 charging laptops. Some laptop computers may draw more than 1/2 amp when fully discharged. If more than 2 laptop lockers are being used to charge simultaneously, it may be necessary to connect the power cords to separate 15-amp electrical circuits to prevent an electrical overload which may trip a circuit breaker. Please consult the owner's manual of the particular laptop computer for further information.

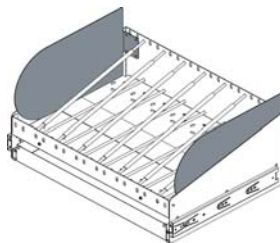


Secure Laptop Locker Options



Optional work surface
(29"W x 20"D x 1"H)
55102

available in Wild Cherry (CH) or Indigo Organix (I) laminate



Side Panels for laptop module
Stabilizes outside laptops-includes set of two
55193



Replacement Key Set for 2-pt lock
55142

Padding for laptop compartments
(protects bottom of laptops)
55184