



InTouch32 Tablet Cart™

The InTouch32 Tablet Cart stores and charges up to 32 devices, all in one of the smallest footprints in the industry.

- » Small Footprint
- » Mobility
- » Rounded Edging
- » Security
- » Superior Ventilation
- » Plastic Dividers



Monitor, computer & accessories not included. Options shown.

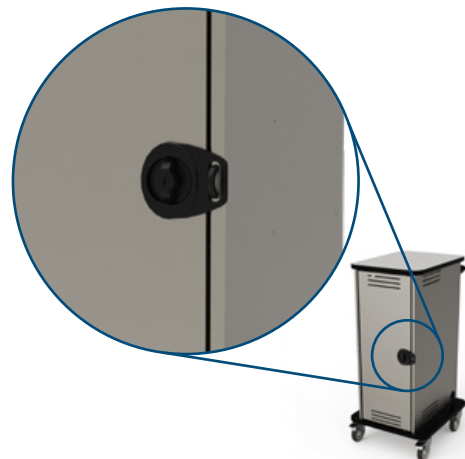
InTouch32 Tablet Cart

Item# 55429



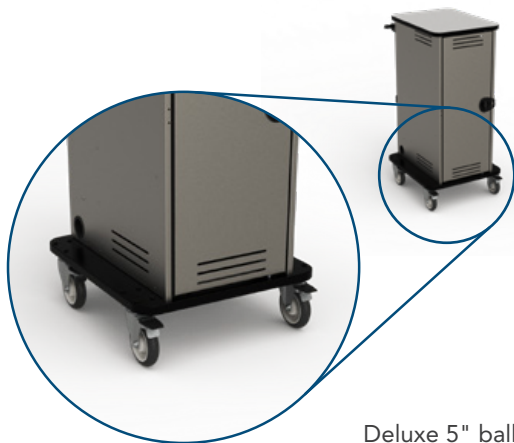
Small Footprint

Compact design fits into any space with the smallest footprint in the industry



Security

Dual-bolt keyed lock and hasp for superior protection and security



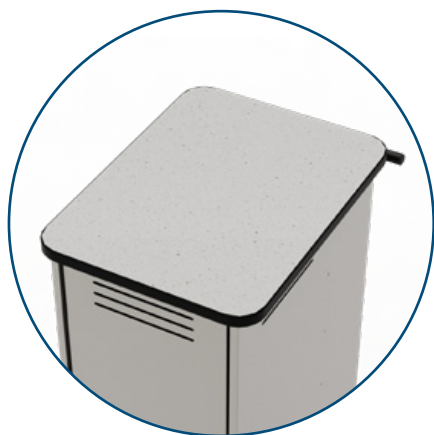
Mobility

Deluxe 5" balloon wheels provide best-in-class mobility



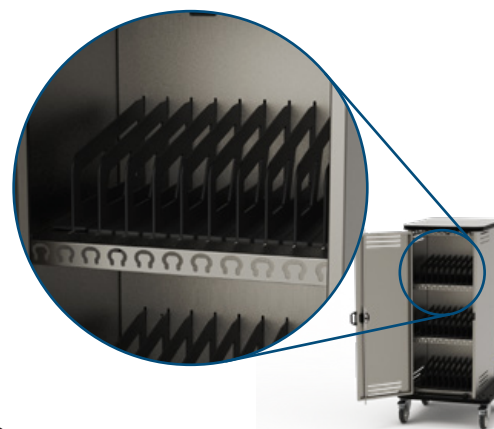
Superior Ventilation

Built in ventilation provides "chimney effect" airflow keeping equipment cool



Rounded Edging

Soft, rounded edging on the worksurface protects walls and doors



Plastic Dividers

Durable ABS plastic dividers help protect devices from scratching

