

Assembly Instructions

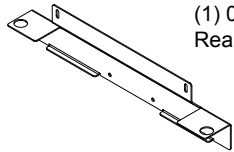
⚠ Important ⚠

Before you begin, read and comply with all safety and operating instructions, and ensure all parts and correct quantities are included.

Any parts damaged during shipment must be reported within 5 days of receipt. To report information regarding missing parts or damage, to purchase parts or accessories, or if you have any questions, please contact us.

www.spectrumfurniture.com
800-235-1262, 715-723-6750

Thank you for purchasing Spectrum products!



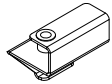
(1) 0132020
Rear Stacking Bracket



(4) 0100167
8-32 x 1-1/2" PH
Thread-cutting
screw



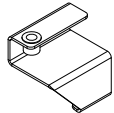
(2) 052605
1/4-20 x 15mm
JC bolt



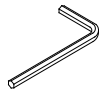
(1) 0132015
Left stacking
bracket



(2) 021588
8-32 Keps nut



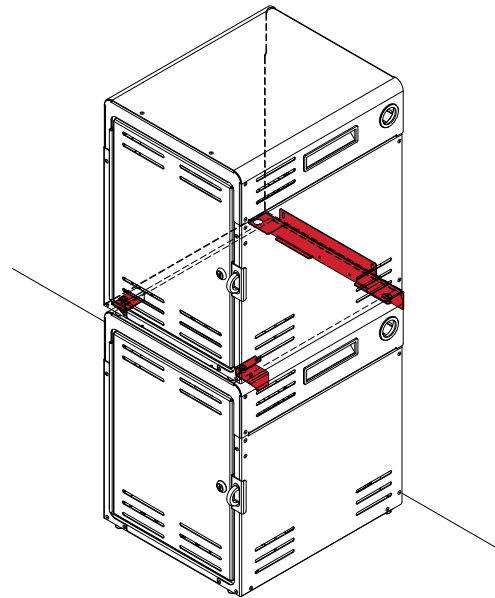
(1) 0132018
Right stacking
bracket



(1) 025039
4mm Hex
wrench

1. Install rear stacking bracket

1. With the first locker on a stable permanent worksurface or floor, carefully stack the second locker on top. This may require two people.
2. Place the rear stacking bracket between the two lockers as shown. **Figure 1.** Be sure the two bracket tabs are hooked into the upper vent slot on the lower locker.
3. Align the bracket / locker mounting holes and threaded studs. Lift the rear of the upper locker slightly to align the bracket holes around the glides.
4. Install (2) 8-32 Keps nuts and (4) 8-32 x 1-1/2" PH Thread-cutting screws, but do not tighten completely.



Stacking Kit for Connect10 Locker 55491

Tools Required



Phillips
screwdriver



Ratcheting
wrench with
5/16" socket



4mm Hex
wrench
(included)

⚠ WARNING ⚠

- This stacking kit is not designed to hang locker from a wall.
- One 55491 kit will stack one locker onto another that sits on a worksurface or floor (one kit is required for each additional level).
- Max recommended stack height: 2 units.
- A stack of 2 or more must be secured to floor or wall.

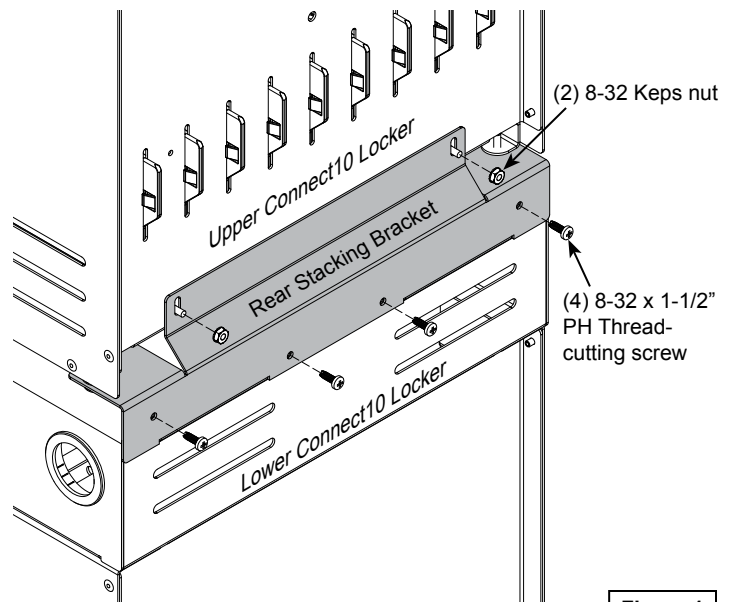


Figure 1

2. Install front stacking brackets

1. Open the upper Connect10 door. **Figure 2.**
2. Lift the front of the upper Connect10 slightly to install the left and right stacking brackets. The brackets hook into the upper vent slot of the lower locker.
3. Secure each bracket inside the upper locker with one 1/4-20 x 15mm JC bolt.
4. Tighten all bracket screws securely.

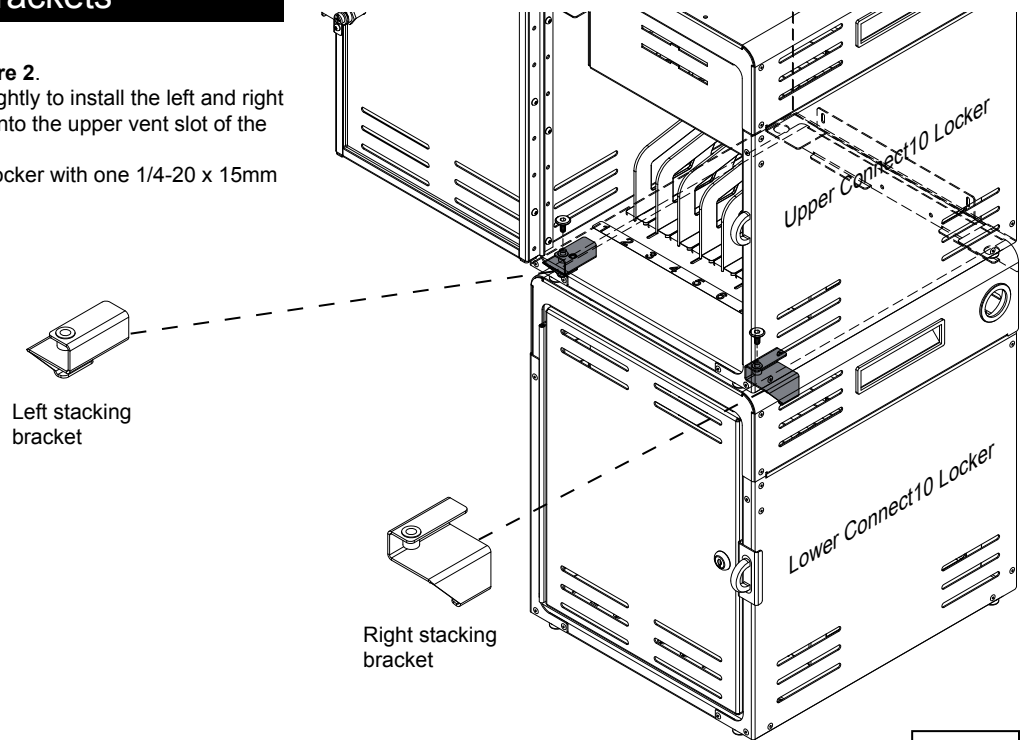


Figure 2

3. Security anchors

The unit can be anchored to a floor, permanent worksurface, or wall for stability and security. Anchoring is required for stability of stacks of 2 or more lockers.

Two #14 x 1-3/4" PHSM screws are provided with the locker for anchoring to a wood worksurface or wall stud. Fasteners for concrete applications are not provided. It is the customer's responsibility to install and use sufficient fasteners for the application. **Figure 3.**

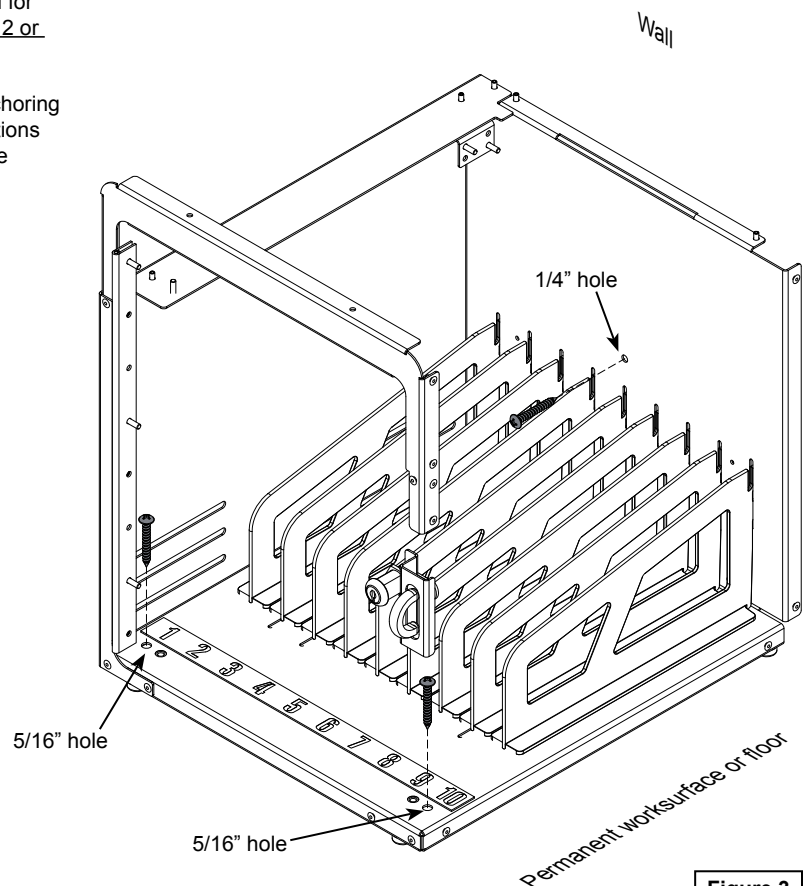


Figure 3