

# Assembly Instructions

## ⚠ Important ⚠

Before you begin, read and comply with all safety and operating instructions, and ensure all parts and correct quantities are included.

Any parts damaged during shipment must be reported within 5 days of receipt. To report information regarding missing parts or damage, to purchase parts or accessories, or if you have any questions, please contact us.

[www.spectrumfurniture.com](http://www.spectrumfurniture.com)

800-235-1262, 715-723-6750

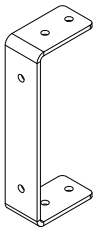
Thank you for purchasing Spectrum products!



(2) 0105275  
3.5" Rack Rail  
(2RU)



(8) 0100167  
8-32 x 1/2" PH  
Thread-cutting Screw



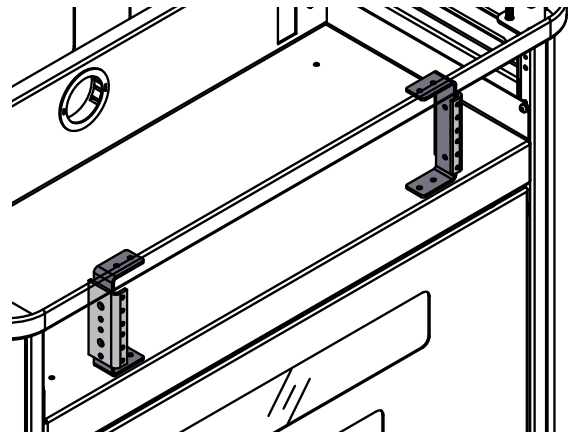
(2) 0119508  
Rack Rail Bracket



(4) 021588  
8-32 Keps Nut



(4) 021491  
#8 x 1/2" PHSM



## 2RU Rack Rail Kit 55113

Tools Required



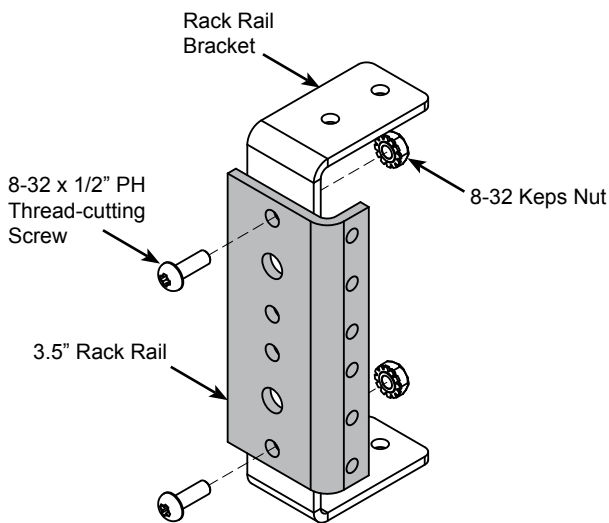
Stubby Phillips  
Screwdriver



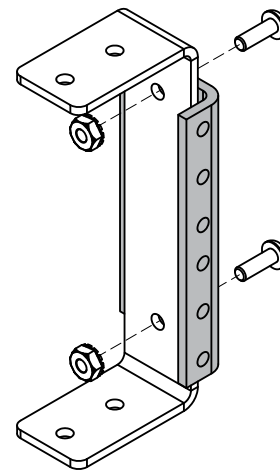
11/32" or Adjustable  
Wrench

## 1. Assemble Rack Rails

1. Assemble the left and right rack rails to the brackets as shown with (2) 8-32 screws and (2) 8-32 Keps nuts. **Figure 1.**
2. Tighten fasteners securely



Left Rack Rail  
Assembly



Right Rack  
Rail Assembly

Figure 1

## 2. Install to lectern

1. Align the rack rail bracket mounting holes with the lectern mounting holes as shown in **Figure 2**.
2. Attach the lower side to the metal shelf using (2) 8-32 x 1/2" PH Thread-cutting screws
3. Attach the upper side to the worksurface with (2) #8 x 1/2" PHSM screws.
4. Tighten screws securely.

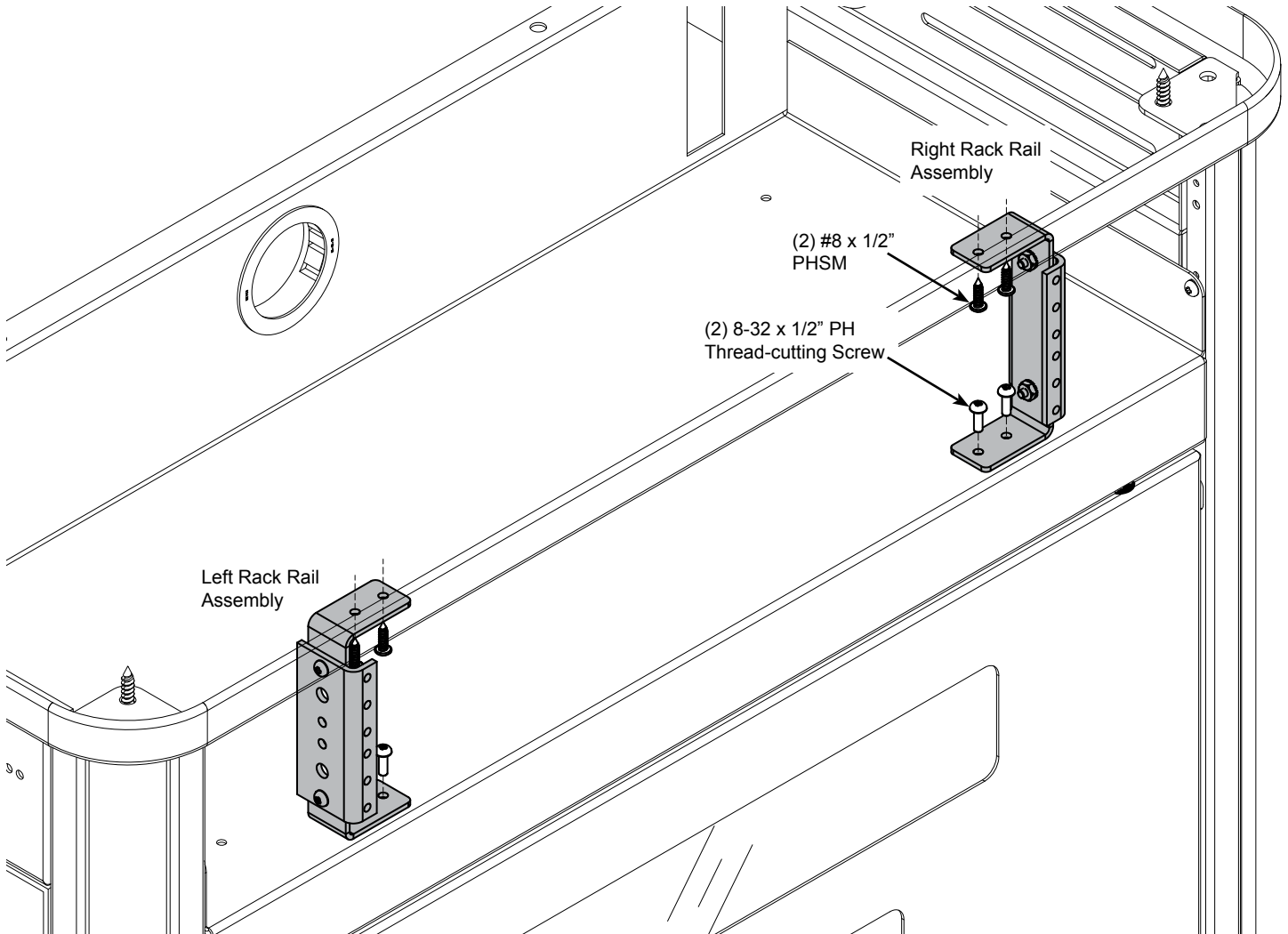


Figure 2