

Assembly Instructions

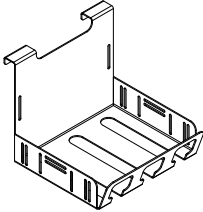
⚠ Important ⚠

Before you begin, read and comply with all safety and operating instructions, and ensure all parts and correct quantities are included.

Any parts damaged during shipment must be reported within 5 days of receipt. To report information regarding missing parts or damage, to purchase parts or accessories, or if you have any questions, please contact us.

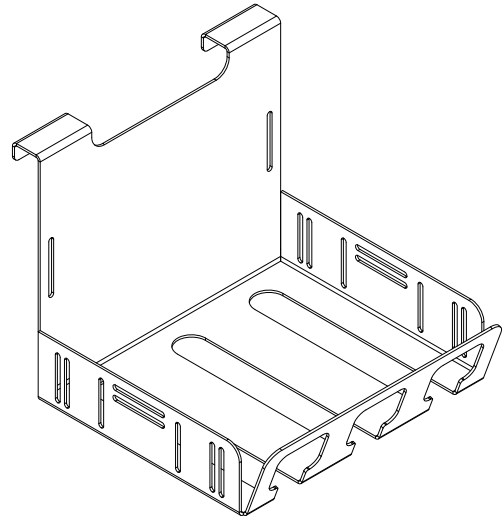
www.spectrumfurniture.com
800-235-1262, 715-723-6750

Thank you for purchasing Spectrum products!



(3) 0117694
QuickBrick™ tray

(3) 0117686
40" Velcro® Strap



Quickbrick™ Trays for IT32 Cart
22464

1. Tray wiring

1. The trays are easier to load outside the cart.
2. Place the charge adapters vertically into each tray as shown. **Figure 1.** (Excess cord may need to be bundled around each adapter.)
3. Secure the adapters to the tray using the tray slots and hook and loop strap.

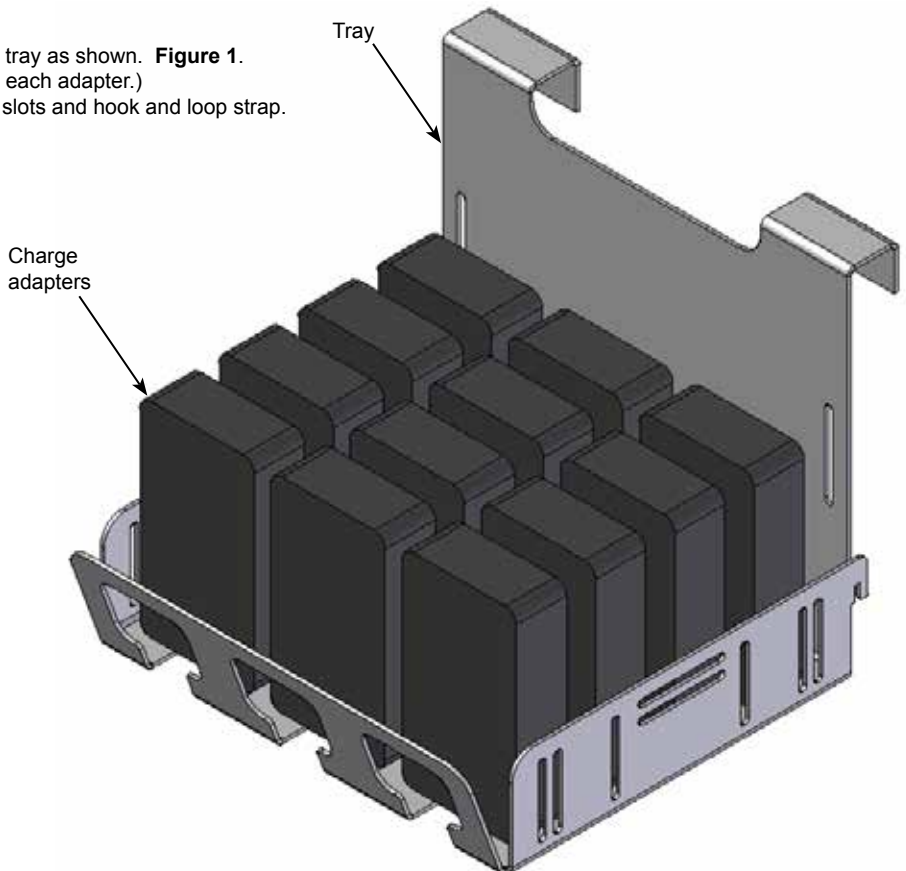
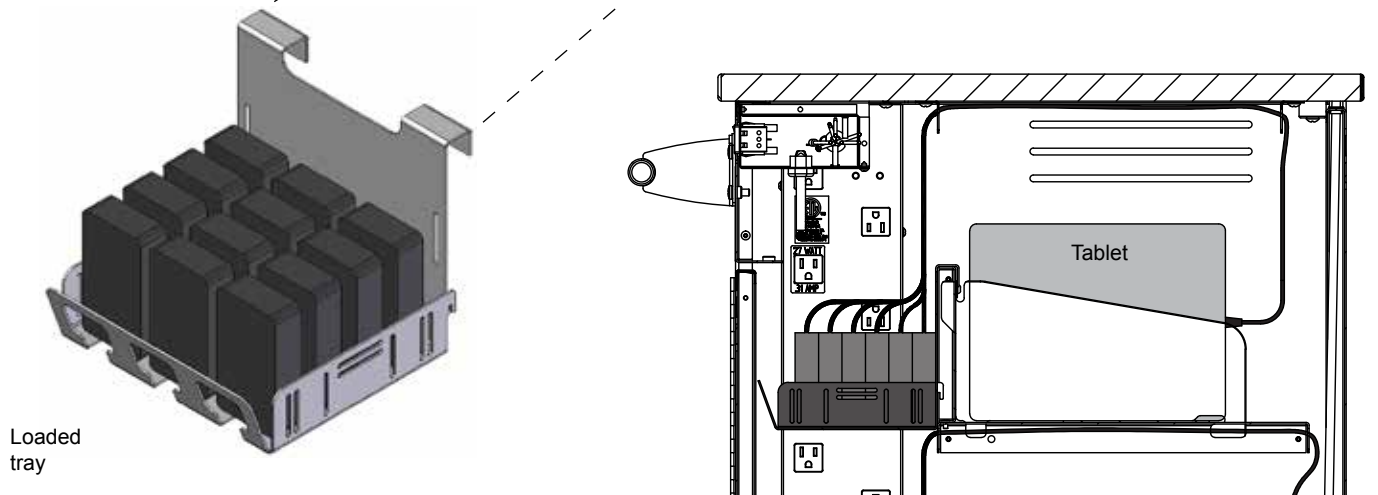
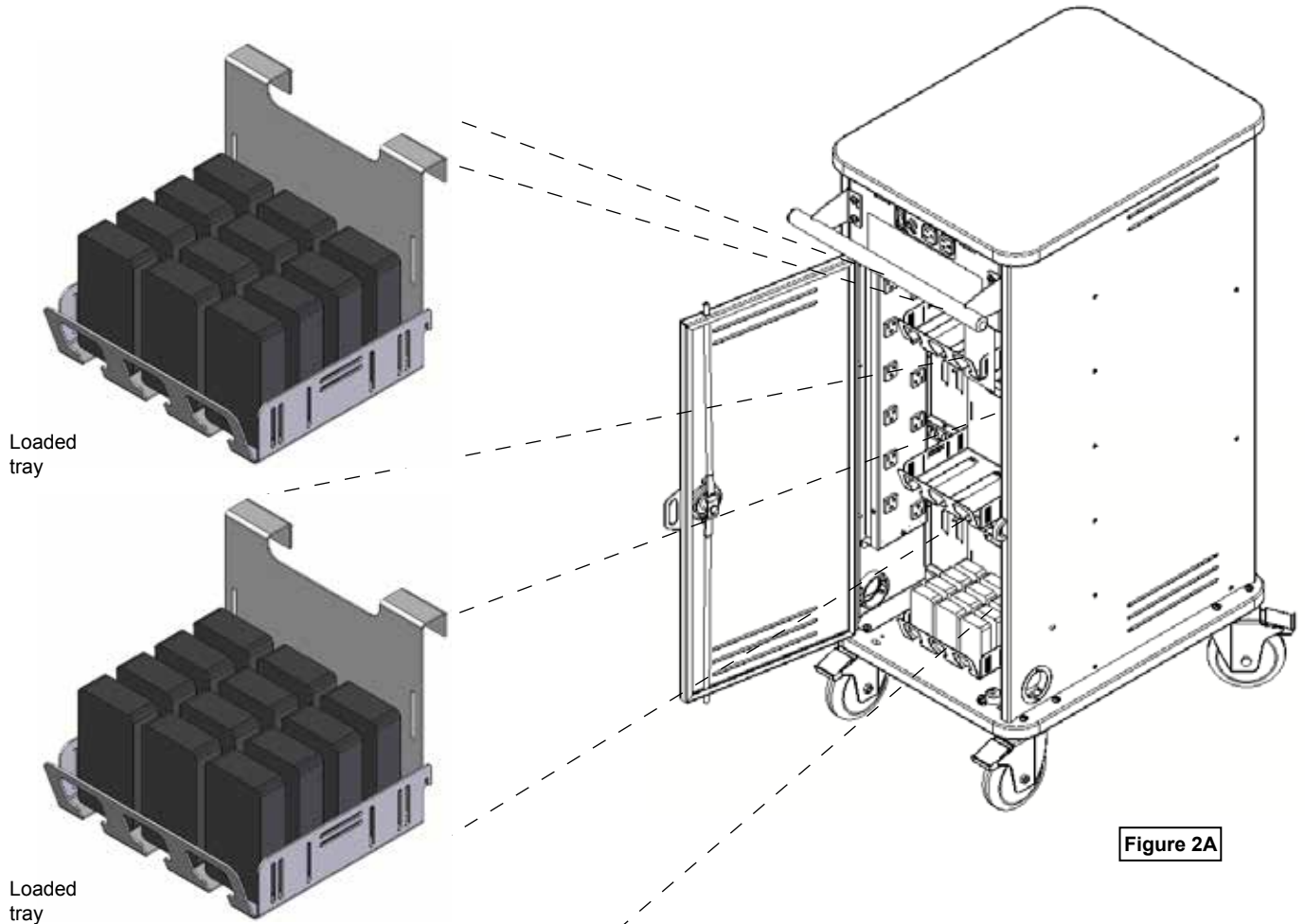


Figure 1

2. Install trays

1. Open both doors and make sure the cart is unplugged.
2. On the student side, place up to 32 tablets into the cart.
3. Set each loaded tray into the cart. **Figure 2A.**
4. Route each charge cord to the student side and secure above each tablet as shown in **Figure 2B.** Leave just enough slack in the cords to provide an easy connection to each tablet.
5. Plug the charge adapters into the power units.
6. Choose a wiring option to secure the charge cords above the tablets. **Figure 3.**

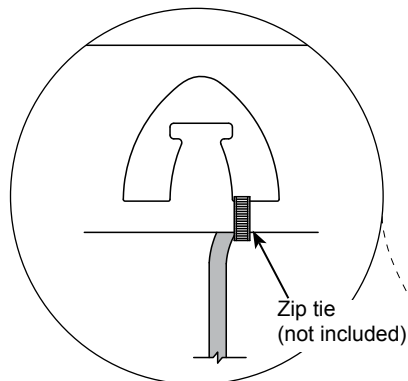


3. Secure charge cords

1. Choose a wiring option to secure the charge cords above the tablets.
Figure 3.

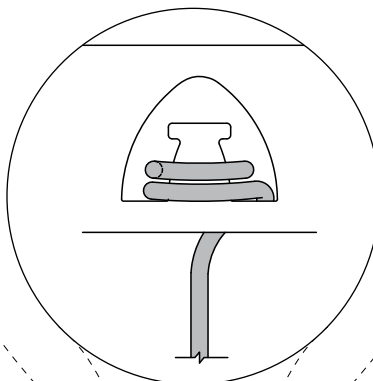
wiring option 1

Zip tie method
permanent



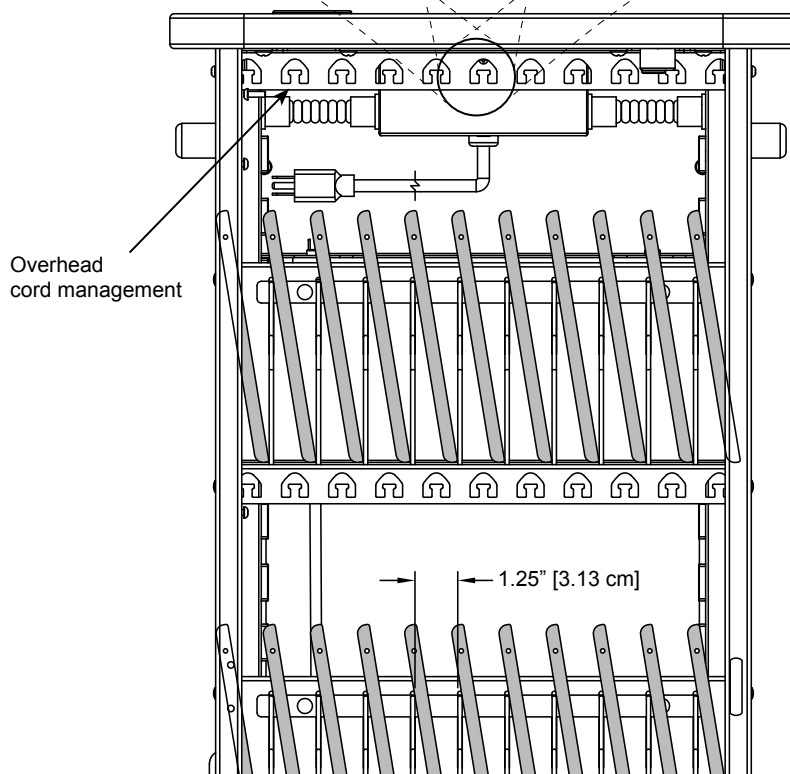
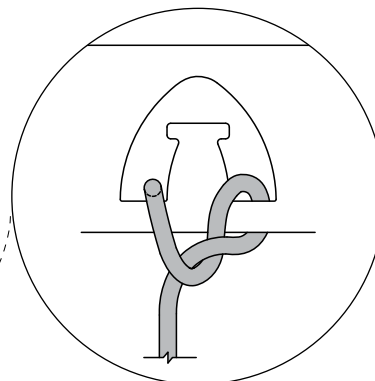
wiring option 2

Single or double wrap method
easily removable



wiring option 3

Knot method
semi-permanent



Student side view

Figure 3