

Assembly Instructions

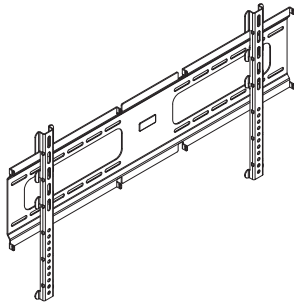
⚠ Important ⚠

Before you begin, read and comply with all safety and operating instructions, and ensure all parts and correct quantities are included.

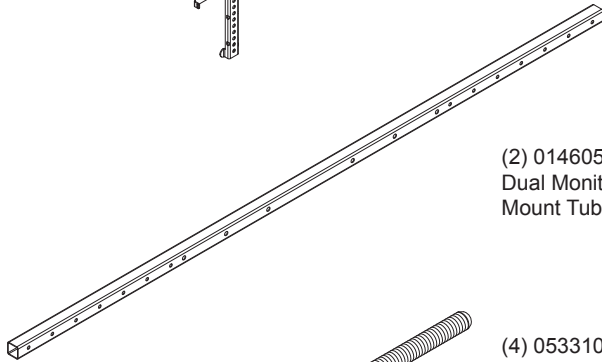
Any parts damaged during shipment must be reported within 5 days of receipt. To report information regarding missing parts or damage, to purchase parts or accessories, or if you have any questions, please contact us.

www.spectrumfurniture.com
800-235-1262, 715-723-6750

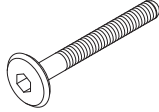
Thank you for purchasing Spectrum products!



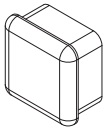
(1) 0119747
Monitor mount



(2) 0146050
Dual Monitor
Mount Tube



(4) 053310
1/4-20 x 40mm
JC bolt



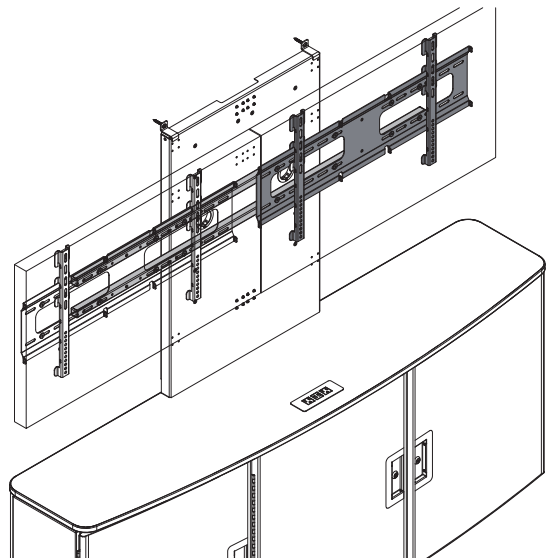
(4) 026301
1"x1" Endcap



(4) 052605
1/4-20 x 15mm
JC bolt

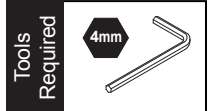
1. Display stand prep

1. If your stand currently has a monitor mount installed, remove the (4) 1/4-20 x 40mm JC bolts securing it to the stand. **Figure 1.** Retain the monitor mount plate and JC bolts—they will be used in step 3.



Dual Display Stand for AV Credenza 55499

- Accommodates two monitors up to 42"
- Adjustable left-to-right
- Requires Display Stand 55498



Note: The display stand panel should be fully assembled and attached to the credenza before proceeding with 55499 assembly. Be sure your ceiling height provides enough clearance for the installed monitors.

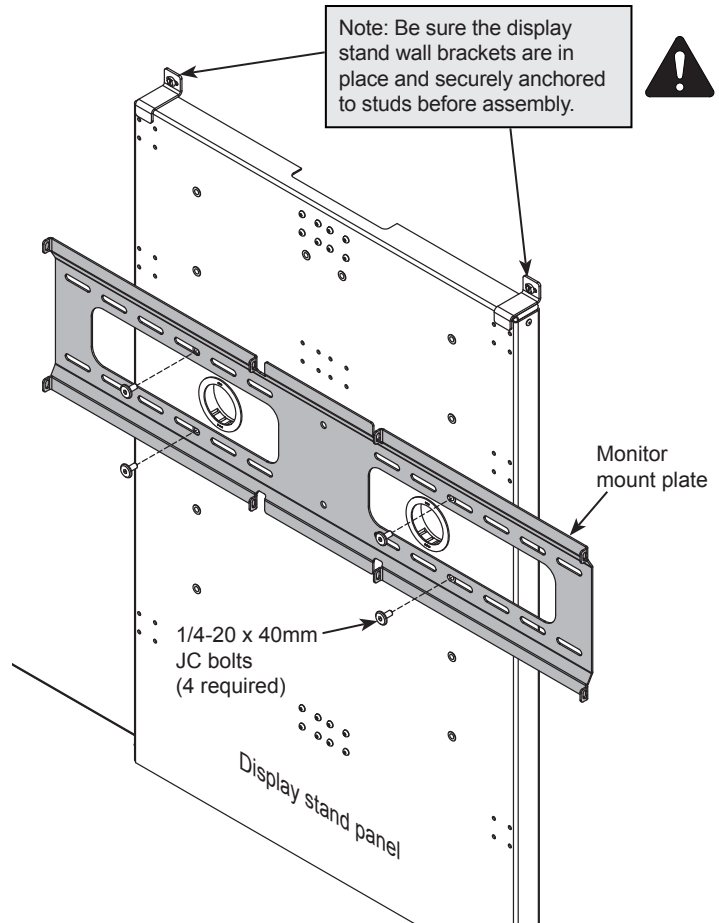


Figure 1

2. Install dual mount tubes

1. Multiple sets of mounting holes are available for the dual monitor mount. Choose a set of holes based on your monitor size and preferred height. **Figure 2.**
2. Attach each tube to the display stand with (2) 1/4-20 x 40mm JC bolts and tighten bolts securely.
3. Install endcaps onto tube ends.

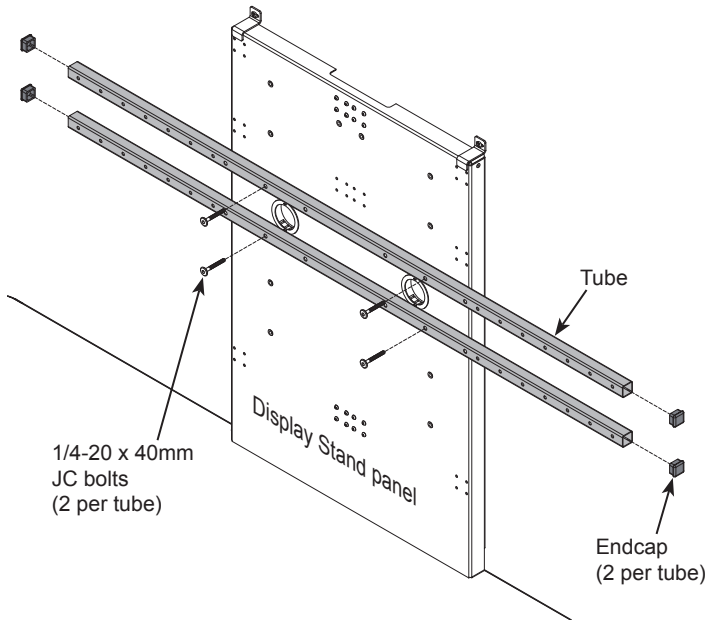


Figure 2

3. Install monitor mounts

1. Attach the monitor mounts to the tubes with 1/4-20 x 15mm JC bolts as shown. **Figure 3.**
2. Tighten securely.

Note: Multiple holes are provided in the tubes and plates to accept and adjust to most monitors up to 42" diagonal. Do not use monitors larger than 42".

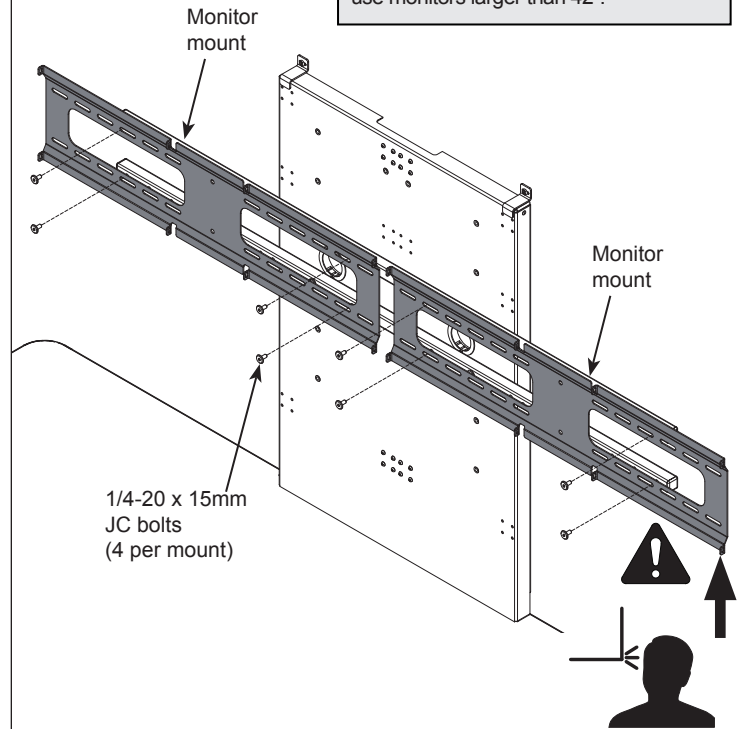


Figure 3

4. Route wires

1. Route monitor wires through the grommets and down into the credenza. **Figure 4.**

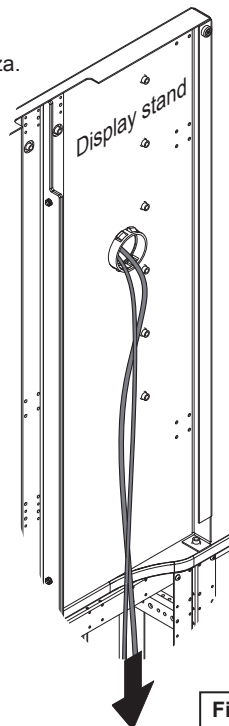


Figure 4

5. Install monitors



- Refer to the instructions included with the monitor mount for complete monitor installation and setup.
- Total weight of both monitors should not exceed 125 lbs.